



CSB Quickstart with USB driver

Installation procedure



CONTENTS

1. INTRODUCTION	4
1.1. COVERED PRODUCTS AND TARGET	4
1.2. WHERE CAN I FIND THE SOFTWARE ?	5
1.3. ALTERNATE OPERATING SYSTEMS	6
1.4. MORE DRIVERS, INTERESTING INFORMATION AND FAQ	6
2. QUICKSTART WITH USB DRIVER INSTALLATION	7
2.1. READ ME FIRST	7
2.2. RUN CSB QUICKSTART SETUP WIZARD	8
2.3. CONNECT THE DEVICE TO THE COMPUTER	9
2.3.1. <i>Windows 2000</i>	9
2.3.2. <i>Windows XP</i>	9
2.4. TEST DRIVER INSTALLATION	10
2.5. TROUBLESHOOTING	11
3. VIRTUAL COM PORT DRIVER INSTALLATION	12
3.1. WHEN SHALL I INSTALL THE VCP DRIVER ?	12
3.2. INSTALLING AND TESTING THE VCP DRIVER	13
3.2.1. <i>Installation</i>	13
3.2.2. <i>Selecting a different COM number</i>	13
3.2.3. <i>Test the VCP installation</i>	14
3.3. BACK TO NATIVE USB DRIVER	15

1. INTRODUCTION

This manual explains how to install Pro-Active USB driver for CSB, K531, and compliant devices. USB driver is shipped in a software package named "CSB Quickstart", together with diagnostic utilities and other demonstration programs.

This manual is separated into two parts :

- **Chapter 2** describes the installation of the CSB Quickstart with the USB driver. **This is the only part you'll have to read for normal operation.**
- **Chapter 3** describes the replacement of the USB driver by a virtual communication port driver (VCP). This part is intended only for developers and people wanting to upgrade the device firmware.

1.1. COVERED PRODUCTS AND TARGET

Pro-Active CSB4-U is an USB contactless reader / writer. Its core is a K531 contactless module, together with an USB-to-serial bridge (FDTI chipset).

Every product using the same architecture are covered by this manual, namely :

- **Pro-Active MOD-K531-PRN** : OEM contactless reader / writer for card printers,
- **Pro-Active CSB5-U** : USB contactless reader / writer with embedded smartcards and SIM/SAM readers, and optional biometric (fingerprint) capabilities,
- **Pro-Active INT-K531-USB** interface for MOD-K531 modules, IWM-K531 proximity readers, and others.



The USB driver for CSB and K531 targets **Microsoft Windows 2000** and **Microsoft Windows XP** only.

1.2. WHERE CAN I FIND THE SOFTWARE ?

The **CSB Quickstart with USB driver** is available online at :

www.pro-active.fr



File name	Version	Size	Date
CSB-4 product flyer			
 c01d100-aa.pdf	aa	211k	18/04/06
CSB-4S datasheet 			
 pftd010-ac.pdf	ac	564k	03/04/06
CSB-4S datasheet 			
 pftd011-aa.pdf	aa	565k	03/04/06
CSB-4U datasheet 			
 pftd020-ac.pdf	ac	761k	03/04/06
CSB-4U datasheet 			
 pftd022-aa.pdf	aa	762k	03/04/06
CSB Quickstart and USB driver installation			
 pnad101-ac.pdf	ac	267k	15/09/06
CSB Quickstart with USB driver (Win2k/XP)			
 CSBQuickStart_1-40.exe	1-40	1509k	15/09/06

Application note : Tuning contactless antenna

- Go to www.pro-active.fr ,
- Click "Downloads" in main menu,
- Select "CSB4" in the downloads page,
- Download the file labelled "**CSB Quickstart with USB driver (Win2k/XP)**" (CSBQuickstart.exe).

1.3. ALTERNATE OPERATING SYSTEMS

On most operating systems, developers can use the K531 SDK to build applications for the CSB or K531 products. Generally speaking, the USB device will be seen as a Virtual Communication Port (VCP), and will be operated as if it were a serial device.

Please refer to K531 development related documentations for more information.

Linux : kernel 2.6 includes the driver for the FDTI USB-to-serial bridge. Pro-Active USB devices are seen as a VCP, with the name `/dev/ttyUSBxx`. Developers can use the K531 SDK to build applications using the CSB4-U through this channel. Driver for older kernels can be found at FDTI's web site (see § 1.4).

FDTI provides also drivers for **Windows CE** and **Mac OS** (see § 1.4).

1.4. MORE DRIVERS, INTERESTING INFORMATION AND FAQ

You can find drivers for different operating systems, as well as a troubleshooting knowledge base, on Future Technology Device International's web site, at

www.ftdichip.com

USB identifiers that can be used by Pro-Active products :

- VID=0403, PID=6001 : *Generic FDTI USB device*. This is the default identifier for all our basic USB products,
- VID=0403, PID=D968 : *Pro-Active Generic USB Device*. This is the identifier for advanced Pro-Active USB-to-serial adapters,
- VID=0403, PID=D969 : *Pro-Active CSB USB Coupler*. This is the identifier for advanced Pro-Active CSB.

2. QUICKSTART WITH USB DRIVER INSTALLATION

2.1. READ ME FIRST

Please read observe following advertisement before connecting the CSB4-U (or any other Pro-Active USB device) to your computer :



Do not connect the device now !

The USB driver must be installed before connecting the device to your computer.

Connecting the device before actual driver installation may lead to a faulty configuration, due to Windows automatically installing other drivers than the one expected.



Disconnect Windows XP SP 1 from the Internet during this procedure

Some users have been experiencing problems installing under Windows XP with Service Pack 1. This is due to Windows XP Update trying to automatically install XP certified replacement drivers in place of the Pro-Active USB drivers.

This problem can be overcome by temporarily disconnecting from the Internet while installing the driver and when connecting the device to the computer for the first time.

Don't forget to download the driver before disconnecting from the Internet.

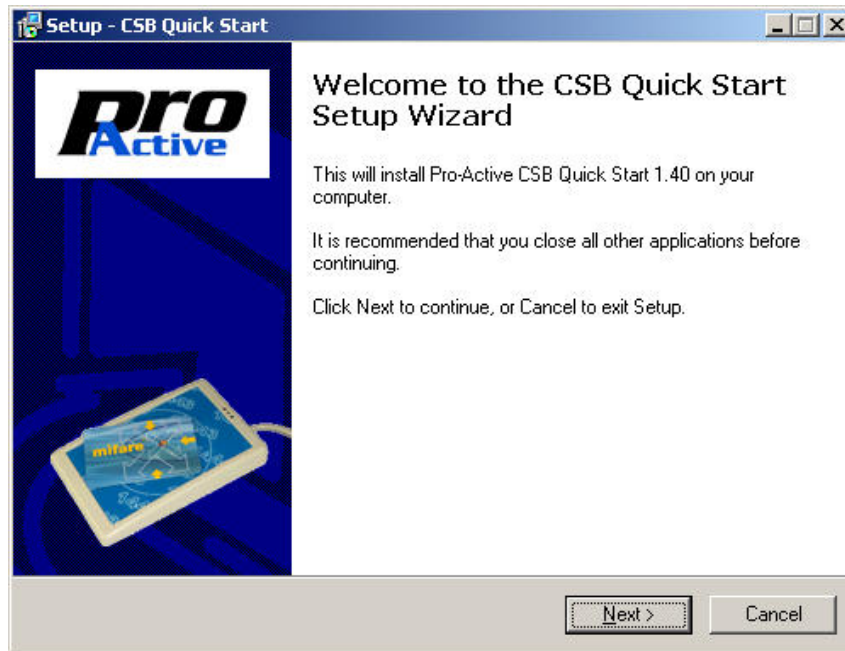


Use a direct USB connection

When you will connect the device to your computer for the first time, plug it directly into an USB port of the computer. Do not connect it through any kind of USB hub or other adapter.

2.2. RUN CSB QUICKSTART SETUP WIZARD

- Log-on to your computer with administrative privileges (Administrator account).
- Download CSBQuickstart.exe according to § 1.2 .
- Run the downloaded installation program.



- During the installation process, you may change the destination directory. Default destination are
 - C:\Program Files\Pro-Active\CSBQuickstart for the USB driver itself,
 - C:\Program Files\Pro-Active\UsbDrivers for testing tools and sample software,
- If prompted by a security warning, please accept driver installation anyway. This warning is only because Pro-Active USB drivers are not-WHQL certified.

2.3. CONNECT THE DEVICE TO THE COMPUTER

- Plug the CSB4-U connector into a free USB port.
- In most cases, Windows will automatically activate the device which the USB driver installed during § 2.2 . Sometimes, the "Found new hardware wizard" will be launched instead. Please follow the procedure below, depending on the operating system version :

2.3.1. *Windows 2000*

If prompted by the "Found new hardware wizard",

- Select "Search for a suitable driver for my device",
- Check the "Specify a location" box,
- When the prompted "Copy manufacturer's files from", browse to the driver installation directory (namely C:\Program Files\Pro-Active\UsbDrivers),
- Confirm your choice,
- Once finished, the device is ready for use.

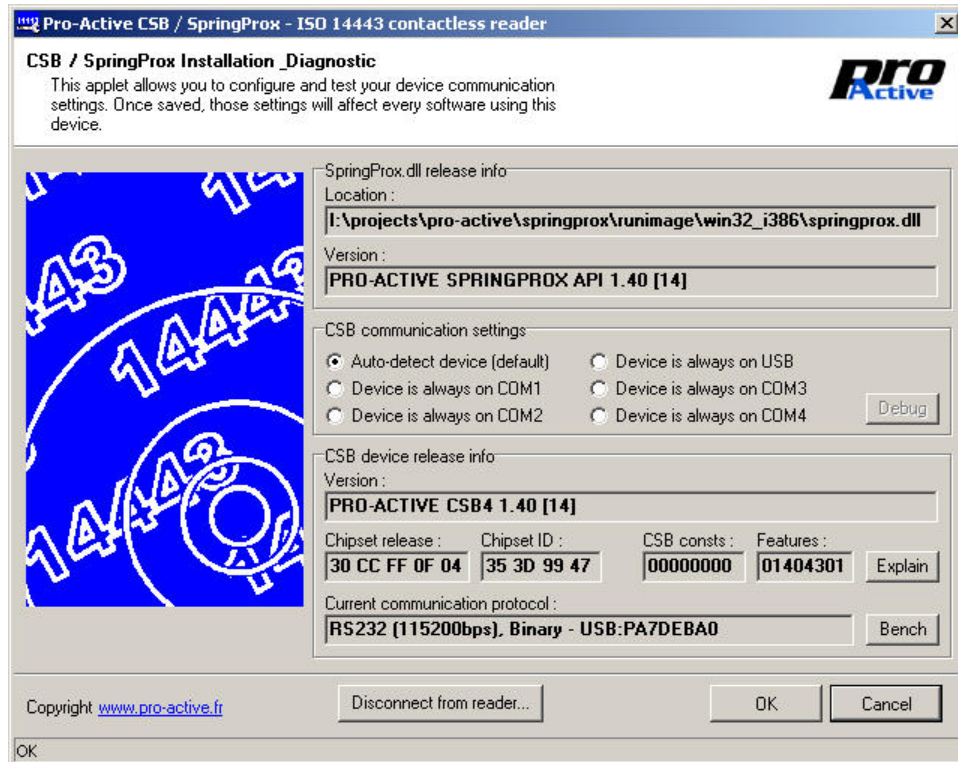
2.3.2. *Windows XP*

If prompted by the "Found new hardware wizard",

- If prompted for connection to Windows Update, select "Do not connect to Windows Update this time",
- Select "Install from a list or specific location",
- Select "Search the best driver in the locations", check the "include this location in the search" box, and browse to the driver installation directory (namely C:\Program Files\Pro-Active\UsbDrivers),
- If Windows XP is configured to warn when unsigned (non-WHQL certified) drivers are about to be installed, click "Continue anyway".
- Once finished, the device is ready for use.

2.4. TEST DRIVER INSTALLATION

- In the “Start menu”, “Pro-Active CSB Quickstart” program group, launch “Diagnostic and Configuration” (CSBDiag.exe software).



- Check the “Device is always on USB” radio,
- Click “Device connection test”,
- After a few seconds, the “CSB device release info” fields are populated with CSB-4 or K531 data. Congratulations, the USB driver has been successfully installed !
- Click “OK” to exit.

2.5. TROUBLESHOOTING

If the test described in § 2.4 is unsuccessful, please observe the following procedure :

- Un-plug the CSB, restart the computer, plug the CSB, and do the test again,
- Un-plug the CSB, install the driver again, and restart the computer before doing the test again.

If still unsuccessful,

- Go to "Control Panel", "System", "Hardware" and "Device Manager",
- Locate the device entry in the tree,
- Right-click on the device and click "Properties",
- Choose "Driver update" or "Change driver" in the "Driver" tab of the dialog box,
- Force a manual installation of the driver from the installation directory.

3. VIRTUAL COM PORT DRIVER INSTALLATION

3.1. WHEN SHALL I INSTALL THE VCP DRIVER ?

When the VCP driver is used, the CSB4-U (or other Pro-Active USB device) is seen as a regular Windows communication port, with the name "COMx".

This is useful if you need either to :

- Upgrade the firmware of your CSB or K531 ("flashing" the device),
- Develop and/or use an application that doesn't rely on the `springprox.dll` library to access the contactless reader¹,
- Access the device console through HyperTerminal or another terminal emulator program. For example, when you have to configure an IWM-K531 reader.

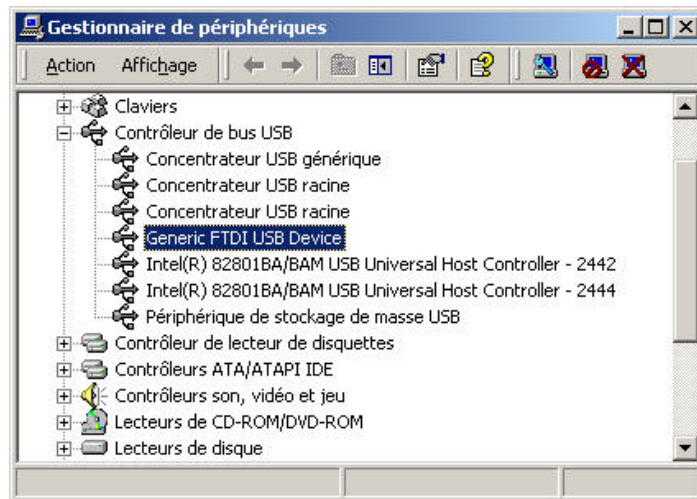
¹ Note that the `springprox.dll` library can also access the device through the VCP, but this is much slower than using native USB support.

3.2. INSTALLING AND TESTING THE VCP DRIVER

3.2.1. Installation

Proceed as follow :

- Perform the USB driver installation, exactly as explained in chapter 2,
- Plug the device in,
- Go to "Control Panel", "System", "Hardware" and "Device Manager",
- Locate the device entry in the tree (name "Generic FTDI USB Device", "Pro-Active Generic USB Device", or "Pro-Active CSB USB Coupler"),



- Right-click on the device and click "Properties",
- Choose "Driver update" or "Change driver" in the "Driver" tab of the dialog box,
- Force a manual installation of the driver located in the "VCP" subdirectory of the driver installation directory (namely `C:\Program Files\Pro-Active\UsbDrivers\VCP`),
- After installation of the replacement driver, the device now appears in group "Ports (COM & LPT)", with the name "USB Virtual COM. Port (COMx)".

The actual name depends on your system history, it can be "COM2", "COM3",... or any other COM number.

3.2.2. Selecting a different COM number

If you want to force another number for the device,

- Right-click on the device and click "Properties",
- Go to the "Port settings" tab, click "Advanced", and select the "COM Port Number" you want. Click "OK".

3.2.3. Test the VCP installation

Launch HyperTerminal. Create a new connection to the Virtual COM Port using the actual name provided by the system or selected in § 3.2.2 .

Default communications settings for most Pro-Active products are :

- Baudrate = 38400bps,
- 8 data bits, 1 stop bit, no parity,
- No flow control, no handshaking.

The device start-up string will appear on the HyperTerminal screen. Congratulations, you are now connected !

3.3. BACK TO NATIVE USB DRIVER

If you want to replace the VCP driver by native USB driver, proceed as follow :

- Go to "Control Panel", "System", "Hardware" and "Device Manager",
- Locate the "USB Virtual COM Port" entry in the tree,
- Right-click on the device and click "Properties",
- Choose "Driver update" or "Change driver" in the "Driver" tab of the dialog box,
- Force a manual installation of the native USB driver from the driver installation directory (namely C:\Program Files\Pro-Active\UsbDrivers).



DISCLAIMER

This document is provided for informational purposes only and shall not be construed as a commercial offer, a license, an advisory, fiduciary or professional relationship between Pro-Active and you. No information provided in this document shall be considered a substitute for your independent investigation.

The information provided in document may be related to products or services that are not available in your country.

This document is provided "as is" and without warranty of any kind to the extent allowed by the applicable law. While Pro-Active will use reasonable efforts to provide reliable information, we don't warrant that this document is free of inaccuracies, errors and/or omissions, or that its content is appropriate for your particular use or up to date. Pro-Active reserves the right to change the information at any time without notice.

Pro-Active does not warrant any results derived from the use of the products described in this document. Pro-Active will not be liable for any indirect, consequential or incidental damages, including but not limited to lost profits or revenues, business interruption, loss of data arising out of or in connection with the use, inability to use or reliance on any product (either hardware or software) described in this document.

These products are not designed for use in life support appliances, devices, or systems where malfunction of this product may result in personal injury. Pro-Active customers using or selling these products for use in such applications do so on their own risk and agree to fully indemnify Pro-Active for any damages resulting from such improper use or sale.

COPYRIGHT NOTICE

All information in this document is either public information or is the intellectual property of Pro Active and/or its suppliers or partners.

You are free to view and print this document for your own use only. Those rights granted to you constitute a license and not a transfer of title : you may not remove this copyright notice nor the proprietary notices contained in this documents, and you are not allowed to publish or reproduce this document, either on the web or by any mean, without written permission of Pro-Active.

EDITOR'S INFORMATION

Published by **Pro-Active SAS**, 13, voie La Cardon 91120 Palaiseau – France

R.C.S. EVRY B 429 665 482 - APE 722 C

For more information, please contact us at info@pro-active.fr .