

INSTALLATION STEPS



PRO ACTIVE
PARC GUTENBERG
13 VOIE LA CARDON
F-91120 PALAISEAU France

CryptoSignBox™ Development Kit

Telephone : +33 164 532 010
Facsimile : +33 164 532 018

E-mail : info@pro-active.fr
Web : www.pro-active.fr

STEP 1 : CryptoSignBox™ Development Kit installation

This step consists to execute the self extractor file "setup.exe" locate on the root of the CD-ROM, then you have to choice a destination folder.

STEP 2 : Pro Active® CryptoSignBox™ installation

1. Plug the adaptator.
 2. Connect the CSB to a free serial port COM1: → COM4:
→ *red led will be on, orange led blink slowly.*
 3. Launch CSBTool
 4. Hit "F1" function key of your keyboard (it is the shortcut to the Activate command).
→ *orange led blink quickly.*
-

STEP 3 : "C++" source code

The Pro-Active® CryptoSignBox™ Development Kit can install the source code of the CSBTool in Borland C++ Builder format.

STEP 4 : MIFARE® Tags

The Pro-Active® CryptoSignBox™ Development Kit contains 10 MIFARE® Tags. They are all initialized to "0x00" and the access condition meet key "A" can read and write all sectors. Key "A" is "FF FF FF FF FF FF".

Important :

The tags is personalized, your company name followed by an index number of the tag is written on sector 1.

Information in this document is subject to change without notice. PRO ACTIVE, CryptoSignBox is a trademark of PRO ACTIVE. Microsoft, Windows are either registered trademarks or trademarks of Microsoft Corporation in the United States and/or other countries.

Pro Active
PARC GUTENBERG
13 VOIE LA CARDON
91120 PALAISEAU
FRANCE

Phone : +33 164 532 010
Fax : +33 164 532 018
mail : info@pro-active.fr
web : www.pro-active.fr

S.A.R.L. with the capital of 15 252€
R.C.S. EVRY B 429 665 482
A.P.E. 722Z
VAT No. FR27 429 665 482 00015

INSTALLATION STEPS



PRO ACTIVE
PARC GUTENBERG
13 VOIE LA CARDON
F-91120 PALAISEAU France

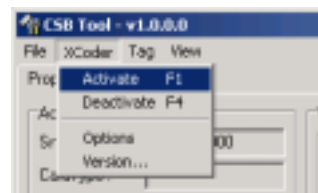
CryptoSignBox™ Development Kit

Telephone : +33 164 532 010
Facsimile : +33 164 532 018

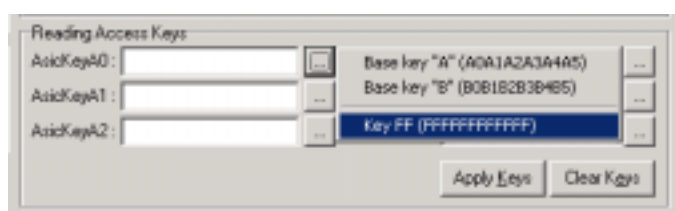
E-mail : info@pro-active.fr
Web : www.pro-active.fr

STEP 5 : Read your first MIFARE® Tags

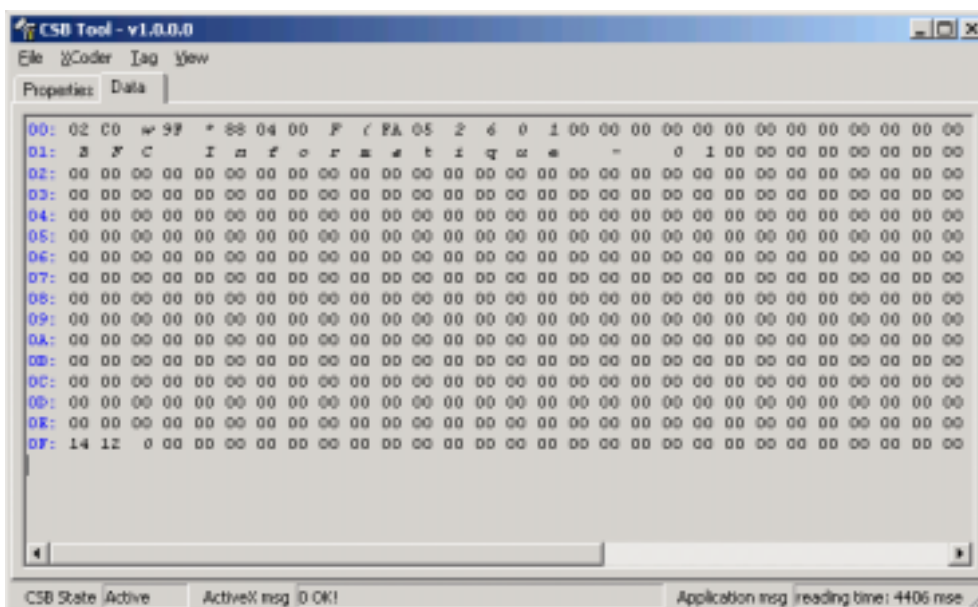
1. Choose "Activate" in the "Xcoder" menu or press "F1".



2. Insert "FFFFFFFF" in AsicKeyA0.
3. Click on "Apply" button.



4. Click on the tab named "Data".
5. Choose "Read (ASCII)" in "Tag" Menu.
➔ The data should appear in the data area.



Information in this document is subject to change without notice. PRO ACTIVE, CryptoSignBox is a trademark of PRO ACTIVE. Microsoft, Windows are either registered trademarks or trademarks of Microsoft Corporation in the United States and/or other countries.

Pro Active
PARC GUTENBERG
13 VOIE LA CARDON
91120 PALAISEAU
FRANCE

Phone : +33 164 532 010
Fax : +33 164 532 018
mail : info@pro-active.fr
web : www.pro-active.fr

S.A.R.L. with the capital of 15 252€
R.C.S. EVRY B 429 665 482
A.P.E. 722Z
VAT No. FR27 429 665 482 00015