



## ***IWM-K632 Configuration Tools***

---

### **Download procedure**

## CONTENTS

<b>1. INTRODUCTION .....</b>	<b>3</b>
1.1. COVERED PRODUCTS .....	3
1.2. DOWNLOADING AND INSTALLING THE FLASHER SOFTWARE .....	3
<b>2. GETTING STARTED WITH IWM-K632 CONFIGURATION TOOLS .....</b>	<b>5</b>

## 1. INTRODUCTION

This document is the user manual related to **Pro-Active's IWM-K632 Configuration Tools**.

Up-to-date version of **IWM-K632 Configuration Tools** software can be downloaded from Pro-Active's web site, at URL <http://www.pro-active.fr/download/soft/>

### 1.1. COVERED PRODUCTS

At the date of writing this document, current version of **IWM-K632 Configuration Tools** software (AA) is able to configure Desfire card using CSB4 connected to the computer via USB or a serial communication device.

New versions of the software may already be available.

### 1.2. DOWNLOADING AND INSTALLING THE IWM-K632 CONFIGURATION TOOLS

The **IWM-K632 Configuration Tools** software is available online at :

<http://www.pro-active.fr/download/soft/>

» Downloads » Software					
File name	Target	Version	Date	Size	
<b>QuickStart for SpringProx (PocketPC)</b>					
Demonstration software to start working with SpringProx products on PocketPC					
 <a href="#">SpringProxPPCQuickStart_ppc_armv4_1-41.exe</a>	PocketPC ARMv4	1-41	27/11/2007	320 kB	
 <a href="#">SpringProxPPCQuickStart_ppc_armv4_1-35.exe</a>	PocketPC ARMv4	1-35	27/11/2007	119 kB	
 <a href="#">SpringProxPPCQuickStart_ppc_armv4_1-21.exe</a>	PocketPC ARMv4	1-21	27/11/2007	189 kB	
 <a href="#">SpringProxPPCQuickStart_ppc2002_arm_1-21.exe</a>	PocketPC 2002 ARM	1-21	27/11/2007	83 kB	
NOTE : Use ActiveSync to install this package on your PocketPC					
<b>Configuration tool for IWMK632</b>					
Command line utility to create master cards for IWMK632					
 <a href="#">sq844p-aa.exe</a>	Windows	aa	08/02/2008	811 kB	
<b>QuickStart for CSB classic and legacy</b>					
Demonstration software to start working with CSB classic (CSB4, CSB5) and CSB6 family in legacy mode. Use this to configure and diagnose CSB connection.					
 <a href="#">CSBQuickStart_1-40.exe</a>	Windows	1-40	15/09/2006	1613 kB	

- Click on the "sq844p-aa.exe" link and save the setup program onto your hard disk.
- Now double-click on setup program (sq844p-aa.exe) to launch the installation wizard.

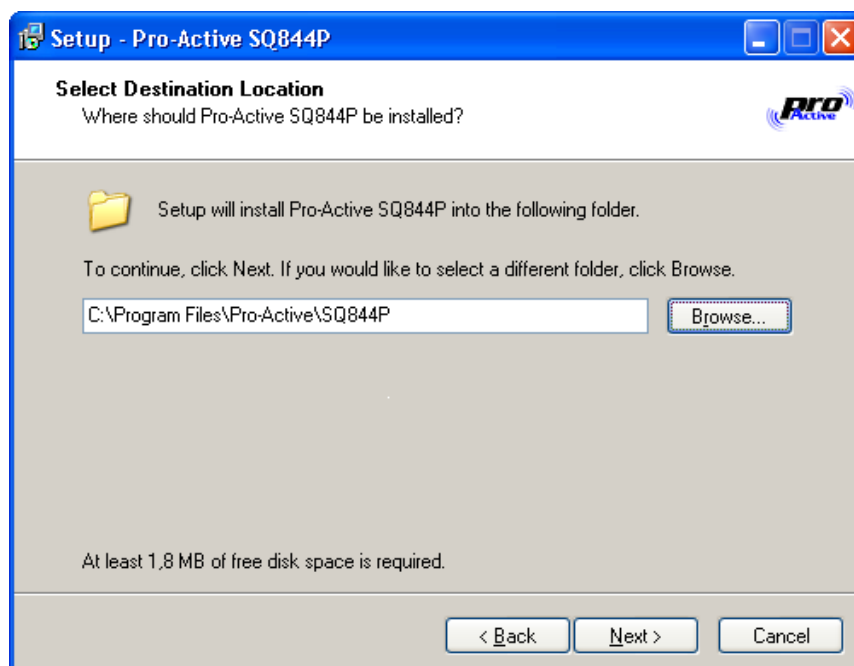


You must have administrative privileges (Administrator account) in order to install the software.

- Click next and select the destination folder.



The setup program will install IWM-K632 Configuration Tools software on your hard drive, typically in C:\Program Files\Pro-Active\SQ844P.



- Follow the installation wizard, until software is successfully installed.

## 2. GETTING STARTED WITH IWM-K632 CONFIGURATION TOOLS

Launch the **IWM-K632 tools directory** from Start Menu :

[Start Menu](#) → [Programs](#) → [Pro-Active Readers](#) → [IWM-K632 tools directory](#)

Read the **IWM-K632 reference manual**, in order to know how to use the software. Open this document from Start Menu :

[Start Menu](#) → [Programs](#) → [Pro-Active Readers](#) → [IWM-K632 reference manual](#)

## DISCLAIMER

This document is provided for informational purposes only and shall not be construed as a commercial offer, a license, an advisory, fiduciary or professional relationship between Pro-Active and you. No information provided in this document shall be considered a substitute for your independent investigation.

The information provided in document may be related to products or services that are not available in your country.

This document is provided "as is" and without warranty of any kind to the extent allowed by the applicable law. While Pro-Active will use reasonable efforts to provide reliable information, we don't warrant that this document is free of inaccuracies, errors and/or omissions, or that its content is appropriate for your particular use or up to date. Pro-Active reserves the right to change the information at any time without notice.

Pro-Active does not warrant any results derived from the use of the products described in this document. Pro-Active will not be liable for any indirect, consequential or incidental damages, including but not limited to lost profits or revenues, business interruption, loss of data arising out of or in connection with the use, inability to use or reliance on any product (either hardware or software) described in this document.

These products are not designed for use in life support appliances, devices, or systems where malfunction of these product may result in personal injury. Pro-Active customers using or selling these products for use in such applications do so on their own risk and agree to fully indemnify Pro-Active for any damages resulting from such improper use or sale.

## COPYRIGHT NOTICE

All information in this document is either public information or is the intellectual property of Pro Active and/or its suppliers or partners.

You are free to view and print this document for your own use only. Those rights granted to you constitute a license and not a transfer of title : you may not remove this copyright notice nor the proprietary notices contained in this documents, and you are not allowed to publish or reproduce this document, either on the web or by any mean, without written permission of Pro-Active.

## EDITOR'S INFORMATION

Published by **Pro-Active SAS**, 13, voie La Cardon 91120 Palaiseau – France

R.C.S. EVRY B 429 665 482 - APE 722 C

For more information, please visit [www.pro-active.fr](http://www.pro-active.fr) or contact us at [info@pro-active.fr](mailto:info@pro-active.fr) .