

SPRINGPROX-RC RUGGED CONTACTLESS SMARTCARD READER + 2 μ SIM/SAM



SpringProx-RC is a full-featured contactless reader / writer with two internal μ SIM/SAM slots.

SpringProx-RC targets TDS Recon rugged handheld computers, running Windows Mobile.



KEY FEATURES

Contactless smartcards are increasingly present in today's daily life, and are no longer limited to corporate offices.

With a focus on design and ease of use, **SpringProx RC** is specially adapted to mobile applications in hostile environments.

SUPPORTED CONTACTLESS SMARTCARDS

SpringProx RC is compliant with ISO/IEC 14443 A/B. Supported smartcards include :

- NXP (formerly Philips Semiconductors): Mifare Classic and UltraLight, Desfire, ProX, SmartMX,
- MultOS or JavaCard T=CL cards,
- ICAO e-passports and other ID or travel cards,
- Calypso transportation cards,
- NFC mobile phones or other NFC-capable objects (tag emulation mode)

A FEW TYPICAL APPLICATIONS

- Loyalty programs
- Micro-payment,
- Card issuing desk,
- User identification,
- Ticket validation,
- Ticket validity control,
- Transportation passes,
- Resort access,
- Event access and monitoring,
- And more

SPRINGCARD & PRO ACTIVE

Established in 2000, **Pro Active** is an innovative provider of smartcard-related solutions, and one of the leaders on the contactless-reader market.

SpringCard distributes **Pro Active's** contact and contactless products worldwide, under a single brand name.

HEADQUARTERS, EUROPE SPRINGCARD

13 voie la Cardon
Parc Gutenberg
91120 Palaiseau
FRANCE

Phone : +33 (0) 164 53 20 10
Fax : +33 (0) 164 53 20 18

AMERICAS SPRINGCARD

964 Fifth Avenue
Suite 235
San Diego, CA 92101
USA

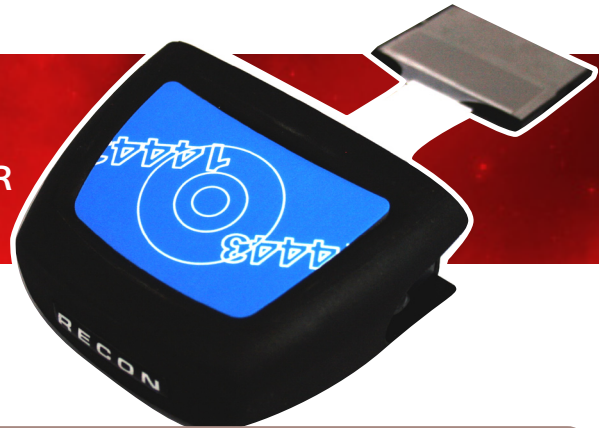
Phone : +1 (619) 544 1450
Fax : +1 (619) 573 6867

www.springcard.com

A PRO ACTIVE BRAND

**Pro
Active**

SPRINGPROX-RC RUGGED CONTACTLESS SMARTCARD READER + 2 μ SIM/SAM



TECHNICAL SPECIFICATIONS

Contactless smartcard interface

Standards	ISO/IEC 14443 A and B, T=CL
RFID carrier	13.56 MHz
Operating distance	up to 5 cm depending on card and on environment
Card baud rate	106, 212 or 424 kbps
Supported cards (partial list) : NXP (Philips) MIFARE Classic & UltraLight NXP (Philips) DESFIRE, SmartMX, ProX Infineon SLE66 family ST MicroElectronics SR, SRI, SRIX families ASK CTS256/CTS512 Calypso (CD97, CD21, GTML, etc) ¹ And virtually any ISO 14443 A or B compliant smartcard	

¹ Calypso card operation is subject to an extra license fee. Contact us for information.

2 x μ SIM/SAM smartcard interfaces

Standards	ISO/IEC 7816, T=0 and T=1
Format	ID-000 (μ SIM)
Card clock	3.6864 MHz
Smartcard class	A and A/B (5V or 3.3V cards) Jumper for selection
Card baud rate	Up to 115200 bps
Remark	μ SIM/SAM slots are kept protected in a dry area

CompactFlash interface

Standard	Compact Flash type I
Power supply	Powered by the handheld (\approx 400mA @ 3V) 5V tolerant
Drivers	Seen as a Plug'N'Play serial port Uses standard driver from Windows CE / Mobile
API and SDK	SpringProx API - Free SDK available

Hardware specifications

Dimensions (LxWxH)	80 x 60 x 35 mm (approx)
Housing material	PC
Weight	\approx 135g (not including the handheld)

Environment and safety

Operating temperature	0 \rightarrow +70°C
Storage temperature	-40 \rightarrow +85°C
MTBF	500 000 hours
Durability	μ SIM/SAM slots : 5 000 insertions
CE mark	EN50082 / EN55022 class B
Other standards	RoHS

Integration

SpringProx-RC has been designed for the TDS RECON handheld
For more information, visit
www.tdsway.com

ORDER CODE

PART #	Description
SP-RC02	SpringProx-RC: ISO 14443-A/B reader/writer with 2 internal μ SIM/SAM slots for TDS Recon.

Information in this document is subject to change without notice.

Copyright © PRO ACTIVE SAS 2008, all rights reserved.
Reproduction without written permission of PRO ACTIVE is forbidden.
SPRINGCARD, PRO ACTIVE, and both logos are registered trademarks of PRO ACTIVE SAS.
All other trademarks are property of their respective owners.

PRO ACTIVE company with a capital of 227 000 €
R.C.S. EVRY B 429 665 482
N.A.F. 722 C
VAT # : FR 27 429 665 482
France

www.springcard.com

A PRO ACTIVE BRAND
**PRO
Active**