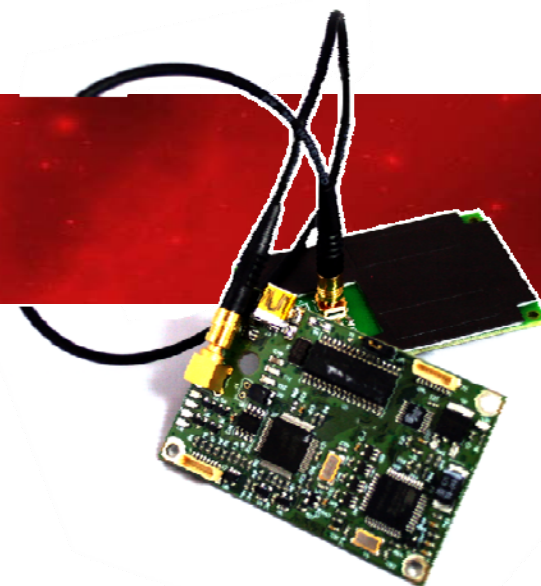


SpringCard

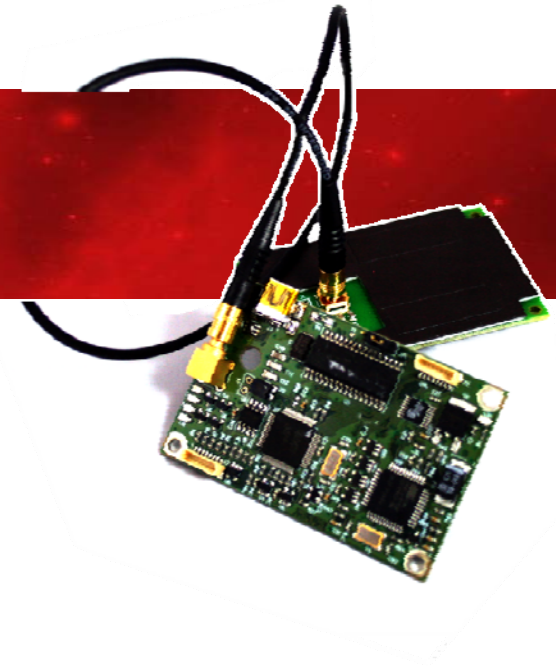
CrazyWriter

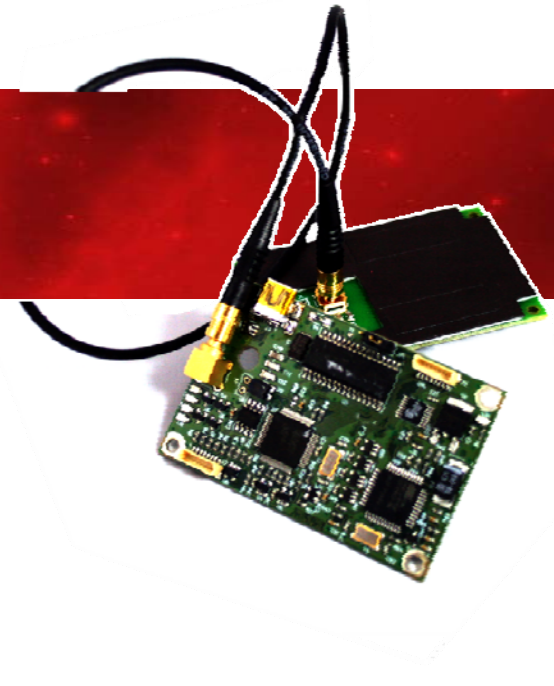
ISO 14443 (A&B) & ISO 15693
and Mifare
contactless reader/writer
+ 2 μ SIM/SAM



Agenda

- Product overview
- Demonstration
- Appendix : PC/SC or Legacy?





Product overview

CrazyWriter assets

Fits easily into :

- Card printers : card personalization
- Vending and ticketing machines
- Fare gates or validators
- Transportation networks

CrazyWriter is an OEM contactless ISO 14443 & ISO 15693 and Mifare reader/writer

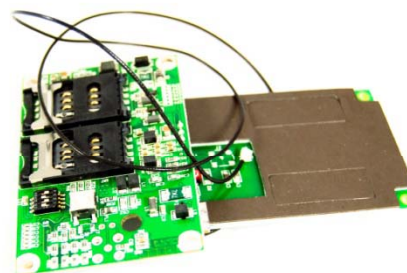
High performance

Full speed USB 2.0

CrazyWriter features 2 μ SIM/SAM slots for secure applications

Easy to integrate

- PC/SC compliant
- 100% compliancy with earlier products in Legacy mode
- Supports virtually any ISO/IEC 14443 A or B compliant smartcard



CrazyWriter is detected as 3 different PCSC readers ! (default mode)

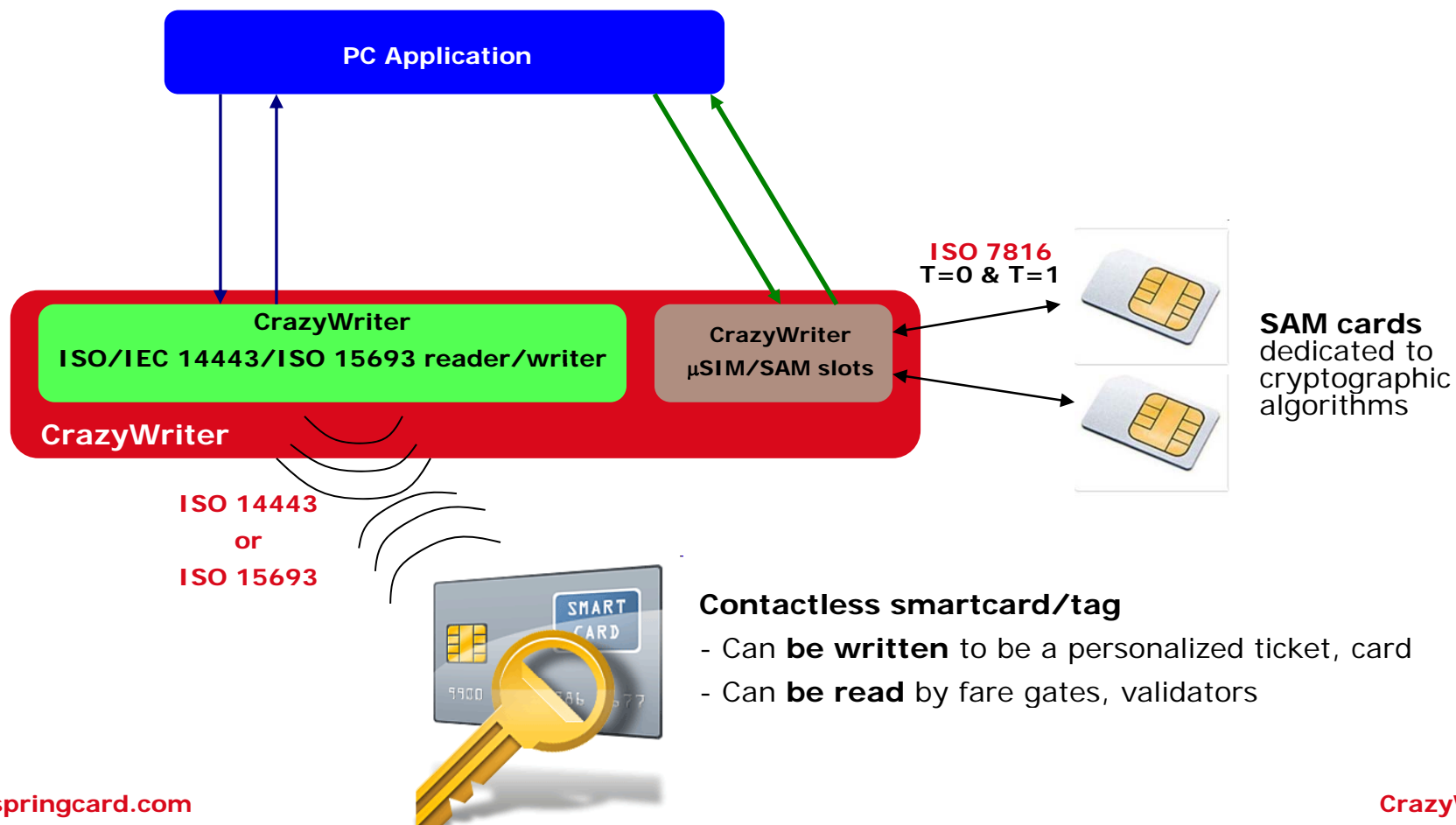


Optional board : RS-232 standard serial interface (DB9 female connector) + motherboard power supply

*Documentation and softwares Free Download link :

<http://www.springcard.com/download/crazywriter.html>

CrazyWriter functionalities



Product scope

CrazyWriter

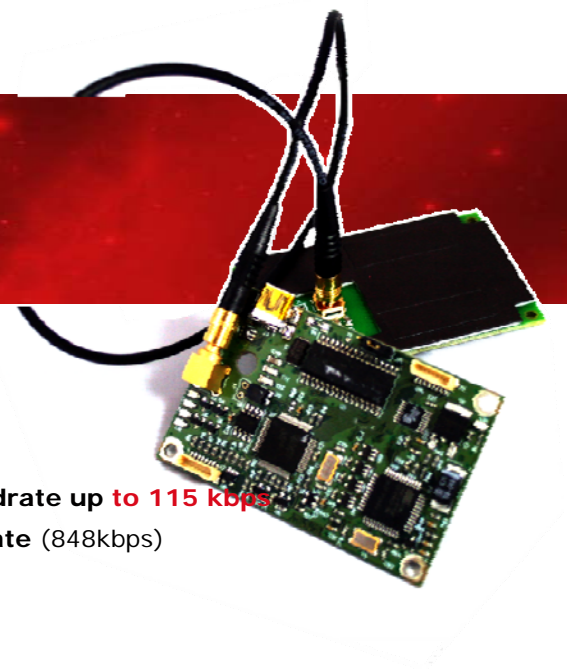
- Is an **OEM contactless ISO 14443 & ISO 15693** and **Mifare** reader/writer
- Features **2 μSIM/SAM slots** (SAM smartcards for secure applications) handling **card baudrate up to 115 kbps**
- **USB interface** : supports **USB 2.0 full speed** (12Mbps), and **fastest smartcard baud rate** (848kbps)
- **Serial interface JST: BM08B-SRSS-TB(LF)(SN)** : **handles baud rate up to 38400 bps (RFU)**
- Handles **any ISO 14443 (type A, B and B')** and **ISO 15693** compliant smartcards

Supported contactless cards

- **NXP** (formerly Philips Semiconductors): **Mifare Classic & UltraLight, Desfire, ProX, SmartMX**
 - **Infineon SLE66 family**
 - **ST MicroElectronics SR, SRI, SRIX families**
 - **ASK CTS256/CTS512**
 - **Calypso (CD97, CD21, GTML...)**
- And virtually any ISO/IEC 14443 A or B compliant smartcard

Supported RFID tags and labels

- **NXP ICODE1, ICODE-SLI**
- **Texas Instrument TagIT**
- **STMicroelectronics LRI**
- **AND MORE**



PC/SC mode and Legacy mode

PC/SC mode (only with USB interface)

CrazyWriter, compliant with PC/SC* version 2

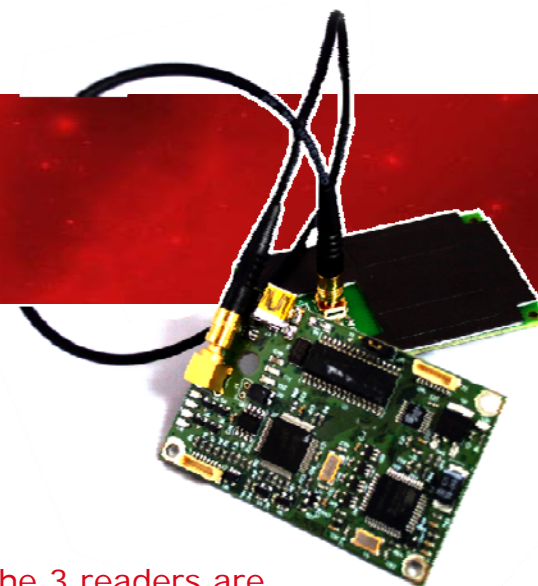
- Brings immediate contactless card support to existing PC/SC applications (interoperability of applications and readers).
- Is supported by major operating systems (Windows 2000/XP/Vista and Linux).
- Detected as a **USB smartcard reader** by the OS.

***PC/SC** : This standardized smartcard reader API, allows developers to work with contactless cards (including Mifare and other wired-logic chips) as easily as if they were classical T=0 or T=1 contact cards.

Legacy mode

CrazyWriter in Legacy mode is 100% compliant with earlier **SpringCard contactless couplers**, such as the popular CSB4 Mifare reader/writer.

- Allows a smooth migration without changing anything in existing software.
- Detected as a **virtual serial com. Port**



The 3 readers are PC/SC and the application is based on the **PC/SC API**

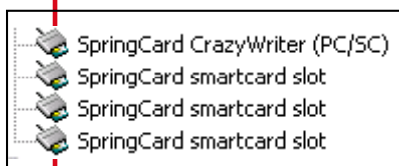
The 3 readers are Legacy and the application is based on SpringCard proprietary library **SpringProxAPI**

How to start with CrazyWriter?

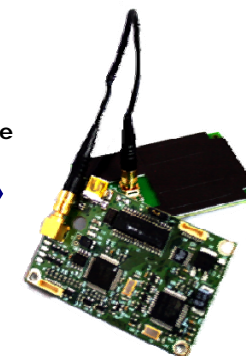
Setup Procedure

- 1/ Download* and install the SpringCard **csb6 family PC/SC driver**
- 2/ Connect the CrazyWriter to the PC/laptop through a USB cable
- 3/ When the hardware detection wizard pops up, select the manual installation mode and install the **SpringCard CrazyWriter (PC/SC)** driver that is listed
- 4/ **3 other wizards** will popup for the installation of the **3 slots** : the "virtual" contactless slot and the 2 SIM/SAM slots
For each slot, select the manual installation mode and install the **SpringCard smartcard slot** driver that is listed
- 5/ Launch your application or an example of application* provided by SpringCard

Your CrazyWriter is ready-to-use.



USB cable



*Free download link :

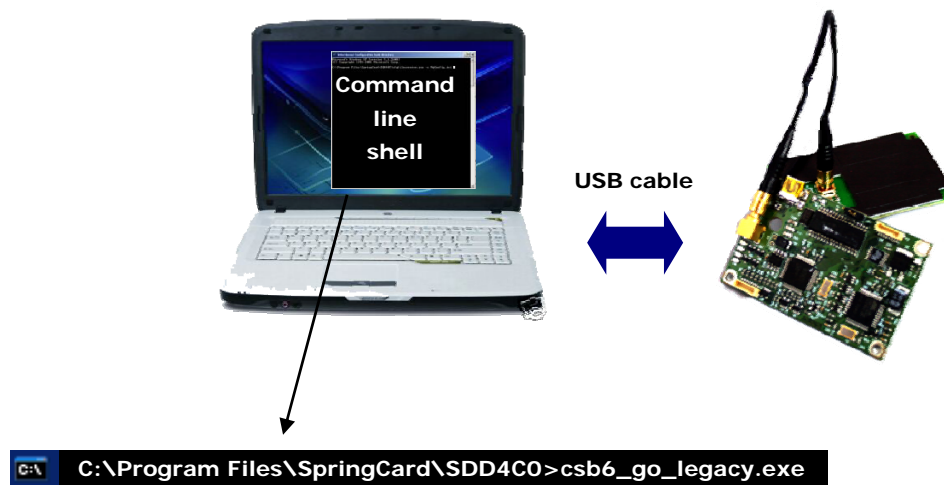
<http://www.springcard.com/download/crazywriter.html>

How to configure CrazyWriter into Legacy mode?

Procedure Legacy mode

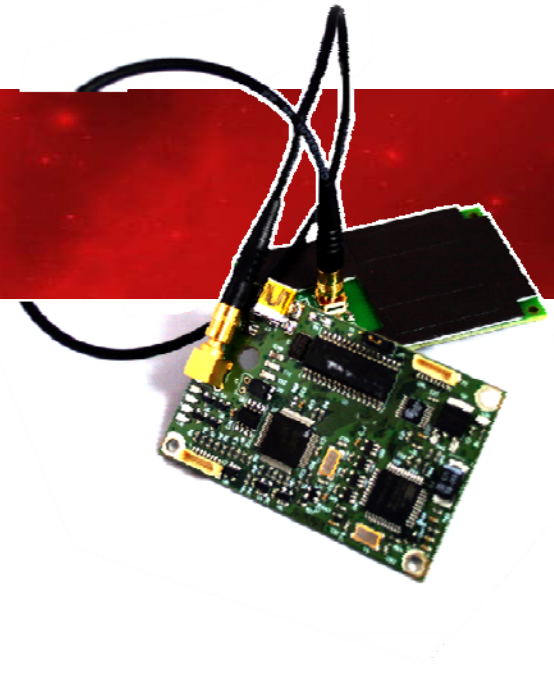
- 1/ Follow the setup procedure steps 1 to 4
- 2/ Download* and install the SpringCard **csb6 family Legacy driver**
- 3/ Download* and install (default) the QuickStart for PCSC (it includes the configuration tool to switch to Legacy mode)
- 3/ Configure your CrazyWriter into Legacy mode by launching a command window and writing the command line :
`C:\ProgramFiles\SpringCard\SDD4C0>csb6_go_Legacy.exe`
- 4/ *Disconnect and reconnect the CrazyWriter*
- 5/ When the hardware detection wizard pops up, select the manual installation mode and install the **SpringCard CrazyWriter (Legacy)** driver that is listed

Your CrazyWriter is in Legacy mode !



* Free download link :

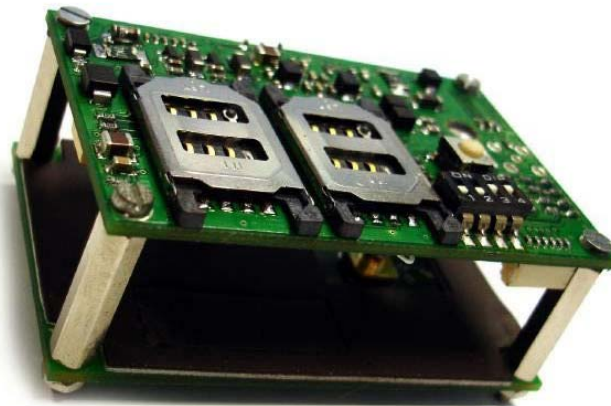
<http://www.springcard.com/download/crazywriter.html>



Demo time!

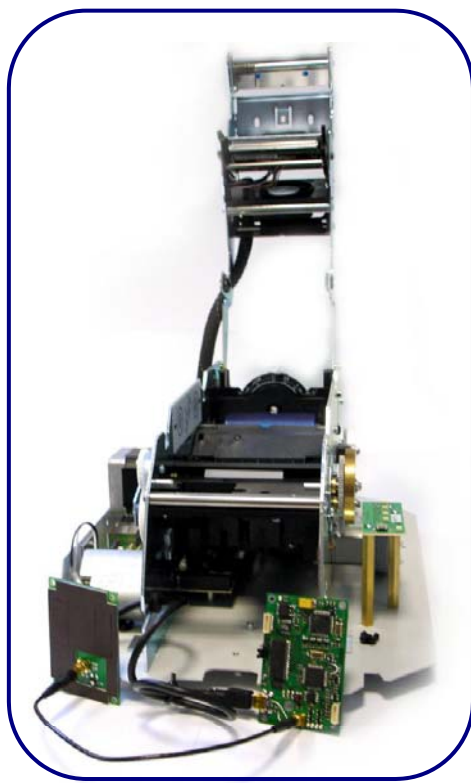
CrazyWriter

Example of implementation



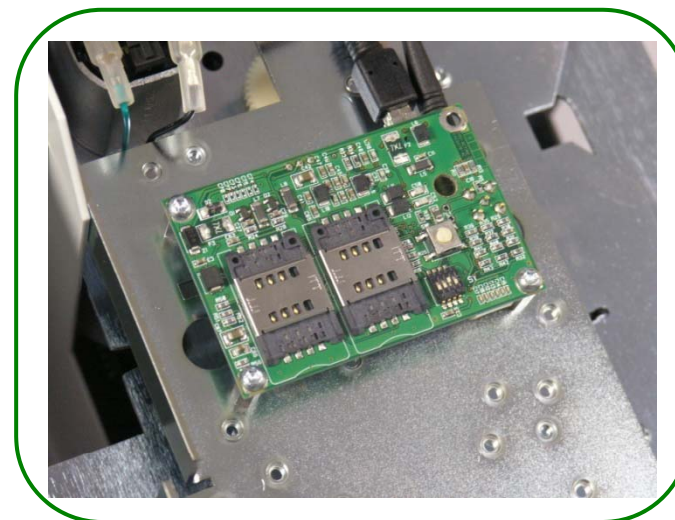
Contactless smartcard printer

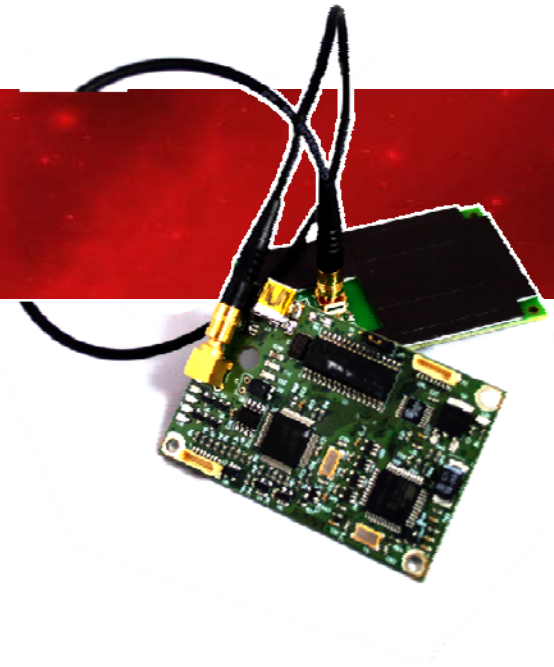
evOLIS



**CrazyWriter is used in PC/SC mode
=> USB interface**

- Card personalization printer
- Vending and ticketing machine





APPENDIX

PC/SC or SpringProxAPI?

What SpringProx API has less than PC/SC

Compared to PC/SC, more features are to be implemented in the application :

	SpringCard PC/SC reader + PC/SC stack	SpringCard legacy reader + SpringProx API
Abstraction of protocol	Reader	After T=CL activation only
Best protocol selection	Reader	Application
Chaining of TPDU	Reader	Reader
Retry and smart recovery	Reader	Reader
Card tracking	Reader + middleware	Application

What SpringProx API has more than PC/SC

The SpringProx API allows more flexibility than PC/SC, and working with memory cards is easier

	SpringCard PC/SC reader + PC/SC stack	SpringCard legacy reader + SpringProx API
Direct control of contactless interface parameters	No	Yes
Reading/writing Mifare memory cards	Indirect (APDU processor in reader with CLA=FF)	Direct and fast access to read/write primitives
Working with a currently unsupported memory card	Firmware upgrade needed	Transparent mode does the job
Exchanging arbitrary frames with the smartcard	Indirect (7816-4 format is mandatory in the stack)	Yes
Latency of card detection	500ms typ. (waiting on SCardGetStatusChange)	25ms typ. (busy loop on SPROX_Find)

Portability aspects (1/2)

PC/SC is not available everywhere – SpringProx API runs virtually on any target

	SpringCard PC/SC reader + PC/SC stack	SpringCard legacy reader + SpringProx API
Windows	Yes SpringCard (or MS) driver	Yes DLL or source code
Linux / some UNIX	Yes PCSC-Lite driver	Yes source code
Windows CE	Partial MS driver only	Yes DLL or source code
Pocket PC / Windows Mobile	No	Yes DLL or source code
MCU / Embedded CPU / Other OS	No	Yes source code or direct access

Portability aspects (2/2)

PC/SC is USB only – SpringProx API architected for serial (RS) communication

	SpringCard PC/SC reader + PC/SC stack	SpringCard legacy reader + SpringProx API
CSB6 family CrazyWriter, Prox'N'Roll, EasyFinger, CSB6U...	Yes	Yes Virtual comm port (USB CDC-ACM standard profile)
CSB4U or CSB5U	No	Yes Virtual comm. port (FTDI's USB to serial bridge)
CSB4S or CSB5S K531 (TLL or RS-232)	No	Yes « Real » comm. Port
SpringProx-CF, CF-UP, RC	No	Yes Compact Flash comm. port (Elan Digital's CF UART)

Contact us

SpringCard

HEADQUARTERS, EUROPE

13 voie la Cardon
Parc Gutenberg
91120 Palaiseau
France

Phone : +33 (0) 164 53 20 10
Fax : +33 (0) 164 53 20 18

SpringCard

AMERICAS

964 Fifth Avenue
Suite 235
San Diego, CA 92101
USA

Phone : +1 (619) 544 1450
Fax : +1 (619) 573 6867



DISCLAIMER

This document is provided for informational purposes only and shall not be construed as a commercial offer, a license, an advisory, fiduciary or professional relationship between Pro-Active and you. No information provided in this document shall be considered a substitute for your independent investigation.

The information provided in document may be related to products or services that are not available in your country.

This document is provided "as is" and without warranty of any kind to the extent allowed by the applicable law. While PRO ACTIVE will use reasonable efforts to provide reliable information, we don't warrant that this document is free of inaccuracies, errors and/or omissions, or that its content is appropriate for your particular use or up to date. PRO ACTIVE reserves the right to change the information at any time without notice.

PRO ACTIVE does not warrant any results derived from the use of the products described in this document. PRO ACTIVE will not be liable for any indirect, consequential or incidental damages, including but not limited to lost profits or revenues, business interruption, loss of data arising out of or in connection with the use, inability to use or reliance on any product (either hardware or software) described in this document.

These products are not designed for use in life support appliances, devices, or systems where malfunction of these product may result in personal injury. PRO ACTIVE customers using or selling these products for use in such applications do so on their own risk and agree to fully indemnify PRO ACTIVE for any damages resulting from such improper use or sale.

COPYRIGHT NOTICE

SPRINGCARD, the SPRINGCARD logo, PRO ACTIVE and the PRO ACTIVE logo are registered trademarks of PRO ACTIVE SAS.

All other trademarks are property of their respective owners.

Information in this document is subject to change without notice. Reproduction without written permission of PRO ACTIVE is forbidden.

All information in this document is either public information or is the intellectual property of PRO ACTIVE and/or its suppliers or partners.

You are free to view and print this document for your own use only. Those rights granted to you constitute a license and not a transfer of title : you may not remove this copyright notice nor the proprietary notices contained in this documents, and you are not allowed to publish or reproduce this document, either on the web or by any mean, without written permission of PRO ACTIVE.

Copyright © PRO ACTIVE SAS 2008, all rights reserved.

EDITOR'S INFORMATION

Published by **PRO ACTIVE SAS** company with a capital of 227 000 €

RCS EVRY B 429 665 482

NAF 722C

VAT# : FR 27 429 665 482