



SpringPark

Wall-mounted reader for
terminals

PMU18330-AA / 10 2018

SpringPark

Wall-mounted reader

SpringPark is composed of two parts, a wall-mounted one designed for terminal installation and another part which is inside those terminals.

TYPICAL APPLICATIONS

- NFC/RFID Identification
- Parking
- Access control
- Electronic Wallet

KEY FEATURES

- Supports most of the contactless cards, NFC tags and RFID labels at 13.56 MHz
- Supports up to 4 reading templates simultaneously
- SIM/SAM slot for secured transactions
- Integrated secure element
- Supports NFC smartphone in card emulation mode

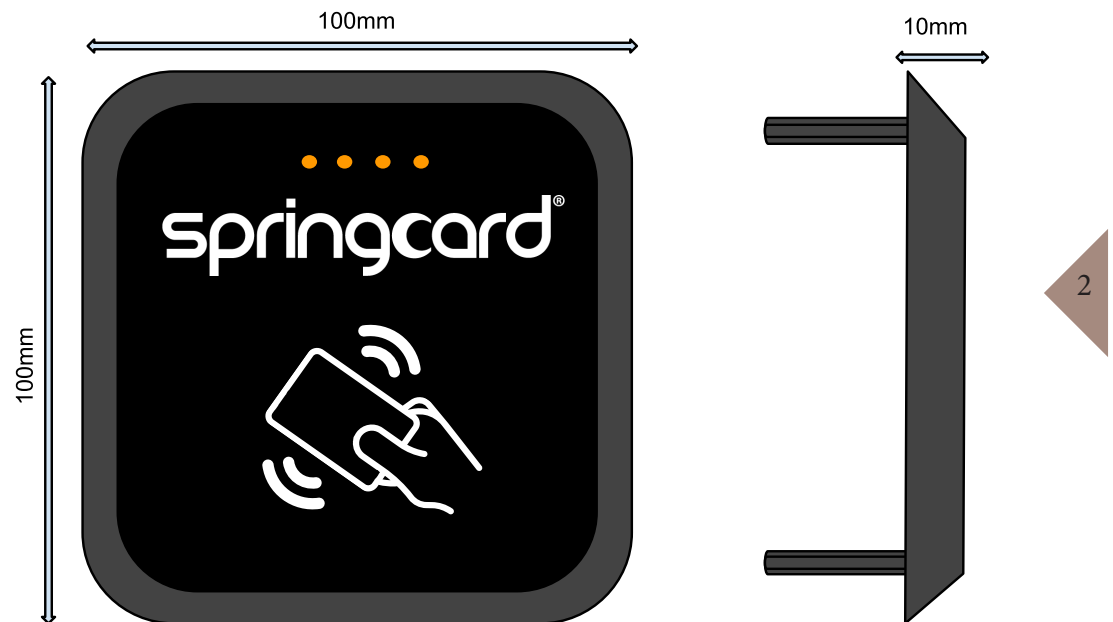


SpringPark: Front panel

The front panel is waterproof which allows an easy implementation on a terminal. This front panel is also thin but is composed of ferrite which allows you to install the SpringPark on metallic surfaces without disturbing the antenna operation.

The assembly is made from behind with threaded rod. The front face shows bevelled edges so there is no possibility for vandalism.

Thanks to its 4 orange LEDs and its buzzer you can check the operation of your transactions.



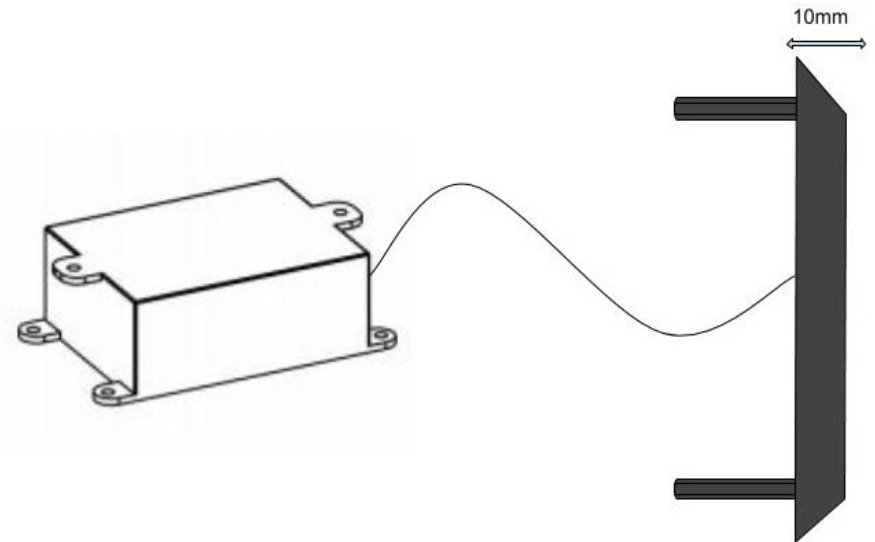
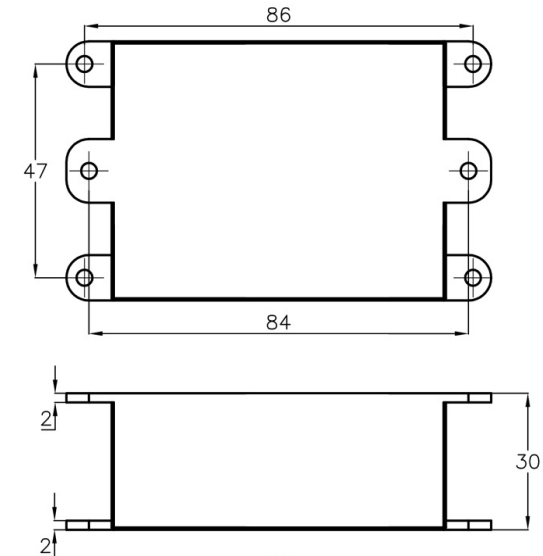
SpringPark: electronic module

SpringPark is at the same time a smart reader and a PC/SC reader. You can go from one mode to the other quickly on the field thanks to SpringCard Companion.

Thanks to its compatibility with PC/SC standards, SpringPark allows you to use a contactless card as easily as a contact card with a simple and direct implementation.

3 A complete SDK allows simple development in an open and interoperable scheme. SpringCard provides a driver for Windows and uses an open PCSC-Lite for other platforms.

It is important to notice that the distance between the front panel and the electronic module can not exceed 30cm.



Technical data

	SpringPark
RFID/NFC Standards	ISO 14443 A-B-B', ISO 15693, ISO 18092
Carrier frequency	13.56MHz (RFID HF, NFC)
RF field level	Typ: 3A/m at 0.5cm
Operating distance	Typical 5cm up to 10cm
Card/tag baudrate	106, 212, 424 or 848 kbps (ISO 14443) 26kbps (ISO 15693)
Communication with host	Serial RS232
Interface	38400 bd/s
SDK	SpringCard Companion
In-field firmware upgrade	No physical action on the device using SpringCard Companion application
Visual	4 LEDs and buzzer
Power	3.3V up to 24V DC
Size (LxH) - weight	69x45mm - Weight: 34g / Antenna size: 80x80mm
Cable / connector	-
Front panel protection IP	IP65
Temperature	Operating Temperature: -20°C + 70°C Storage temperature: -40°C + 85°C
Humidity	IP65
MTBF	500 000 hours
Approvals	EN300330-2 V1.6.1 / EN300330-1 V1.8.1 / EN 301489 -1 : V1.9.2 / EN 301489 -3: V1.6.1
Environmental approvals	RoHS
Warranty	2 years



SpringCard offers a wide range of products to answer the largest possible amount of needs and uses. With 18 years of experience in contactless smartcards, communication technologies and the development of mobile and embedded systems, R&D SpringCard's team is a valued partner to help you create your own solution or product.

Our locations

Angers - Paris
San Diego - San Francisco - Sydney



www.springcard.com