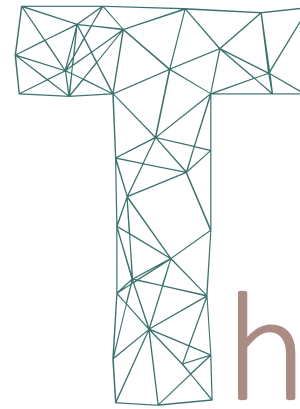




# 2015



he company

springcard®

# A word from the President

As a company developing its expertise in contactless solutions, SpringCard keeps its projects under continuous improvements and innovation.

Our technologies are used in everyday life, helping smooth daily relations to people and objects, creating better services for people and providing safety and reliability to customers' and partners' projects.

For all these reasons, we listen carefully to issues faced by governments, professionals and private circles, lending more than ever an attentive ear to needs, trends and problems.

We reduce our products consumption, with due regard to the possibilities provided by technologies. We do so, not only upon requests from our customers, but driven by inner convictions and by the desire to act differently. This difference creates value for companies that place their trust in us.

Also, we avoid as much as possible the use of disposable batteries since their use are not ecofriendly from our point of view.

Concerning projects, it is our duty to express our opinion whenever being asked to develop solutions that will not last or choices that are not responsible. We are courageous enough to speak out when something does not humanly suit us, in order to convey our values to the client. We build and develop innovative solutions following this logic, which provides us with even more motivation to improve our processes and products.

SpringCard's staff has one main mission to fulfill: to lead everyone who expresses needs (decision-makers, contractors, technicians) to make the most consistent, pragmatic and open choices, under the condition that they are in line with our values. If our technologies are difficult to understand, they have to be easy to use, to be useful, and to have the lowest ecological impact, while remaining sold at the best cost.

Behind our technologies, there are men and women who share the same values. SpringCard is human-sized, and is empowered by each of its employee, which actions are led by a man. This man aims to be responsible and aware of the impact of his acts on the society, on the environment and on the future, and he is aware of the example that he has to give.



**Denis Pietersoone**

SpringCard's President

## SpringCard'expertise

- ✓ High-frequency RFID (13,56Mhz), NFC (near field communication)
- ✓ Contactless and contact smart cards, transactions security
- ✓ Application architectures related to transport, access control and micro-payment sectors
- ✓ Networks, Bluetooth and BLE, Internet of things, sensors

### What is common to a french transportation card and a sensor used to control the cold chain ?

Near field communication (NFC), of course!

Electronics belongs to our daily life and is very well integrated in our environment. Invisible but omnipresent, this technology is developed for the benefit of all.

In the sector of transportation or payment, the technology meets the system developer's security requirements as well as the user's demand for a smooth user experience. Concerning the cold chain, electronics allow, at a low cost, the traceability of processes and the safety of consumers or of patients in the medical sector.

### Contact persons



**Justine Leclercq**

Customer Service

**Timoteo Giacomello**

Sales Department



**Daphnee Lucenet**

Field Application Engineer

**Johann Dantant**

Research & Development and  
Quality Departments



**Claire Artaud**

Internal Services Department

# The little story of human-sized company



First building access control units based on embedded Linux



Sagem Morphi integrates a module K531 in biometric terminals used by *Aéroports de Paris*

SpringCard creates a branch in San Diego (US)

JCDecaux orders 30 000 K531 modules related to *Vélib* project in Paris

Tech-Event chooses the Prox'N'Roll to provide the IT management cards show



Launch of the ProxRunner, RFID Bluetooth reader, in partnership with Baracoda (Ingenico)

2001

2004

2007

2009

2000

2003

2005

2008

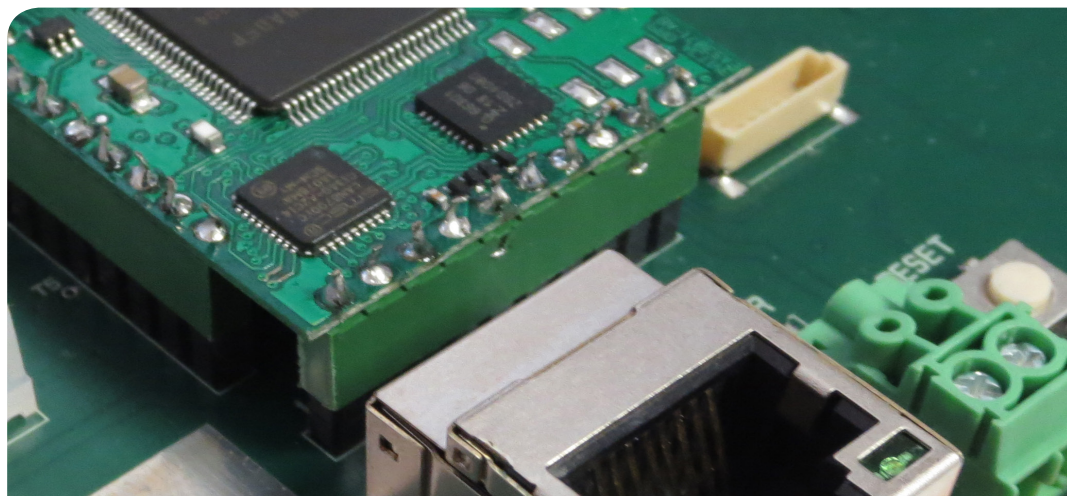
Creation of Pro Active

The SpringCard card readers is used by Thalys' inspectors

Creation of SpringCard trademark

Launch of EasyFinger which is equipped with a fingerprint optical sensor





The Research & Development Department is installed in Angers  
Launch of the technical blogpringCard Tech Zone

Design of the 'VisitorPoint', first RFID/NFC reader connected to a mesh wireless network (IEEE 802.15.4) dedicated to the event market

2010

2014

2012

Partnership with Evolis is confirmed: the CrazyWriter fits all its card printers



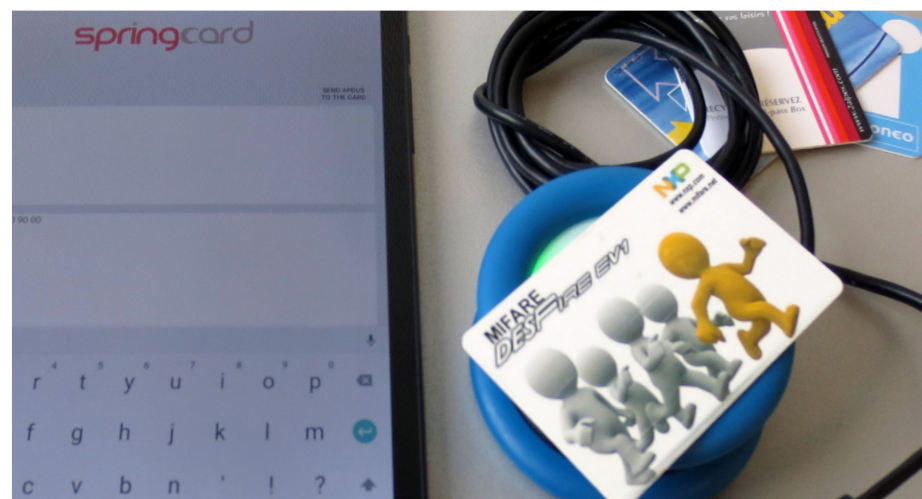
2015

Pro Active SAS becomes SpringCard SAS

SpringCard extends its scope of expertise by integrating Bluetooth Low Energy technology to its new range of products named 'SpringBlue'

## A few key figures

2,3 M\$ annual sales  
30% of them on export  
more than 300 active clients  
and 100 000 products in the whole world



# Our products

## We provide the product you need.

Our range of products is designed to answer all uses: desk, wall-mounting, aggressive environment, mobile use...

The products which we propose include naked modules to integrate (OEM) and ready for use products. Our catalog of antennas completes the range.

Thanks to this wide range, we are thus able to meet your needs, even the most binding, concerning dimensions, consumption or shock resistance.

## Our products come from modular platforms.

The prices range is also wide. So whatever your technical constraints and target prices are, you will probably find the proper product.

Through this approach, we will be very quick to react for your project.

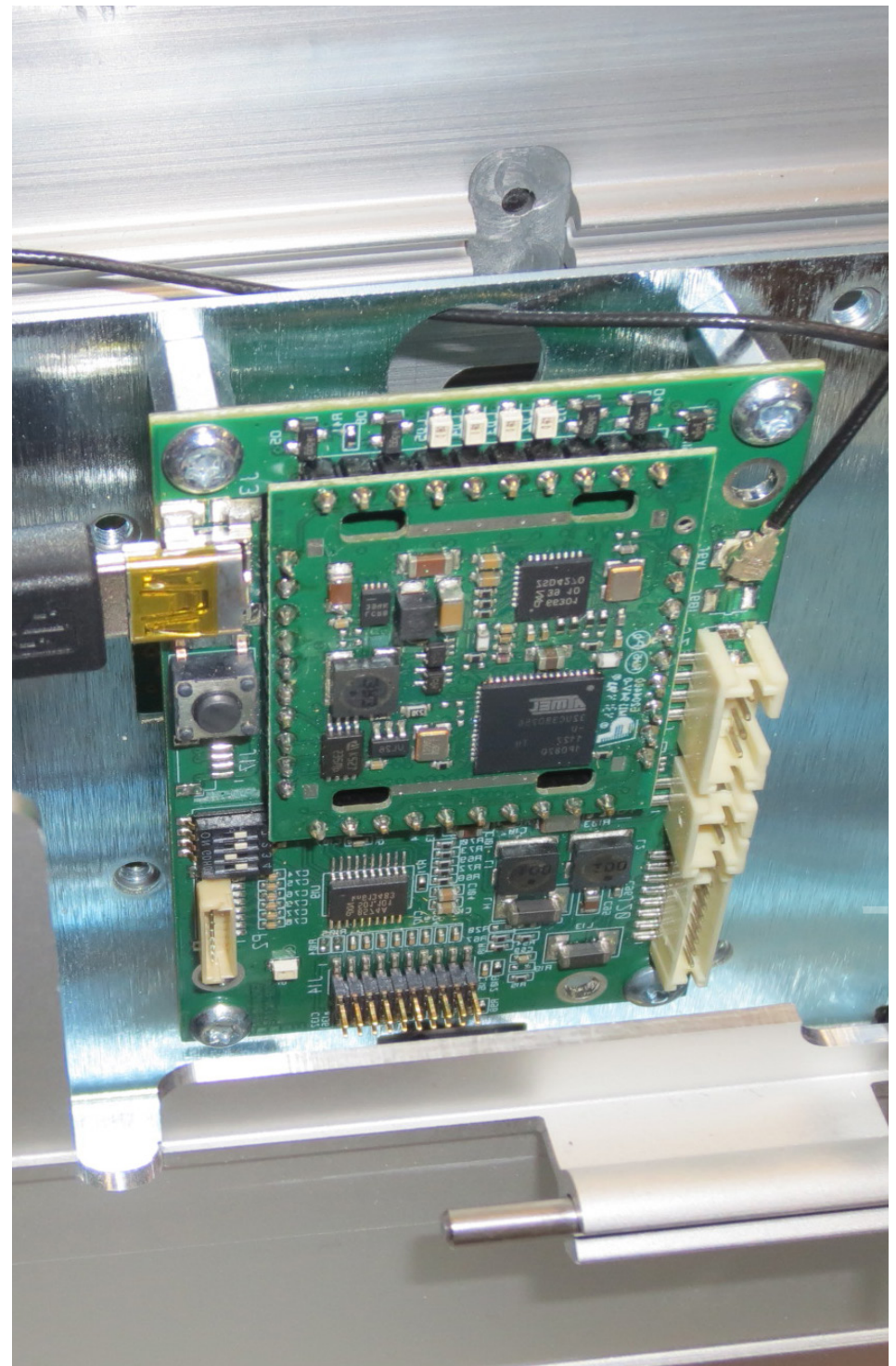
## Do you need a coupler or a reader?

A reader interacts with the card or the NFC object according to a processing logic designed in advance.

A coupler conveys orders from an application or from a host system and thus widens the field of the uses.

If the simplicity of use requirements or the implementation constraints often mask the difference between these two products, their logic is different.

Fortunately, whatever your need is, SpringCard offers couplers and readers devices and helps you to choose the most fitted solution for your project.



## The assets of our products

simple to use

enable a fast  
development

for every  
environments

for  
lean and scalable  
projects

match  
your needs

reliable

### Controlling the energy consumption

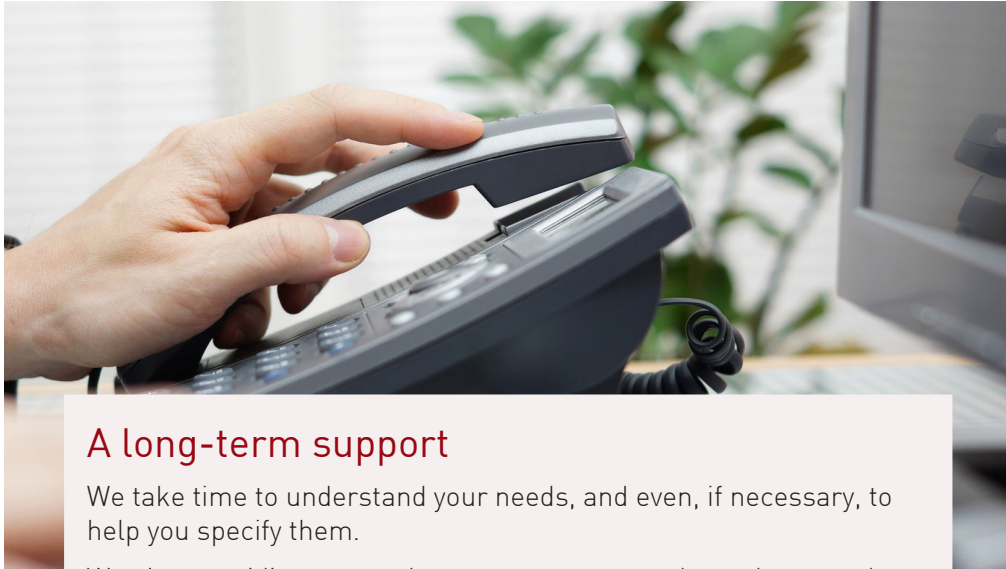
The sectors of the bike sharing service or of the electric vehicle led to the emergence of new requirements regarding the autonomy of battery systems. That is why the range of SpringCard' products grows rich with readers and couplers capable of waking up only at the approach of a card or an NFC object.

### A range dedicated to mobile uses

In association with its partners, SpringCard also develops a range of mobile peripherals from which services on smartphones or tablets are designed, for a better support towards the new uses related to the Internet of Things.



# Our services



## A long-term support

We take time to understand your needs, and even, if necessary, to help you specify them.

We aim at guiding you to choose among our products the ones that are the best suited to your project.

Sometimes, the dialogue is so open that it is possible to finally advice you to use other technologies.

Our support is complete, up to the whole design stage:

- ✓ to make sure that the product will be well integrated, concerning both hardware and software aspects,
- ✓ and to aim at an optimal-long-term working.

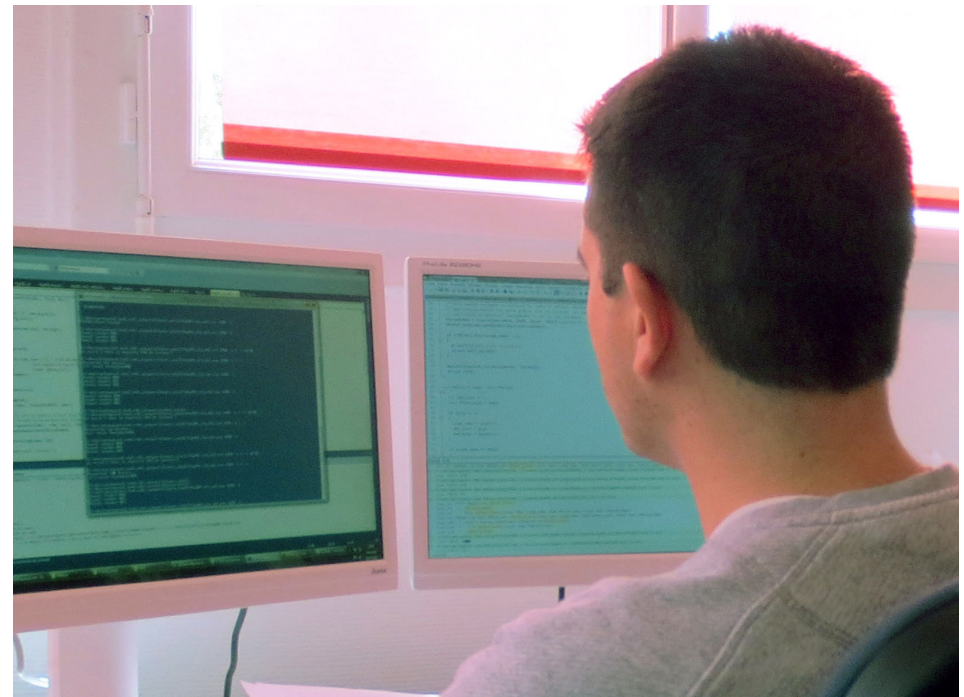
SpringCard can also promote the quality of its after-sales service which is noticed in the sector.

## State-of-the-art equipment to serve your project

SpringCard is proud of its 15 years of experience in 13.56MHz systems, as well as its state-of-the-art equipment (MicroPross tool of qualification, LeCroy oscilloscope, VNA) used for the analog and digital design of your products

## We intervene whenever the state of your project needs:

- ✓ Analysis, specifications writing, project methodology
- ✓ Request of proposal writing, definition of architectures
- ✓ Hardware and software designs, unit tests,
- ✓ Integration and ergonomics designs, mechanical design, mecatronics design and prototyping,
- ✓ Validation, certifications
- ✓ Industrialization files, documentations and packaging



## Our sharpened development skills

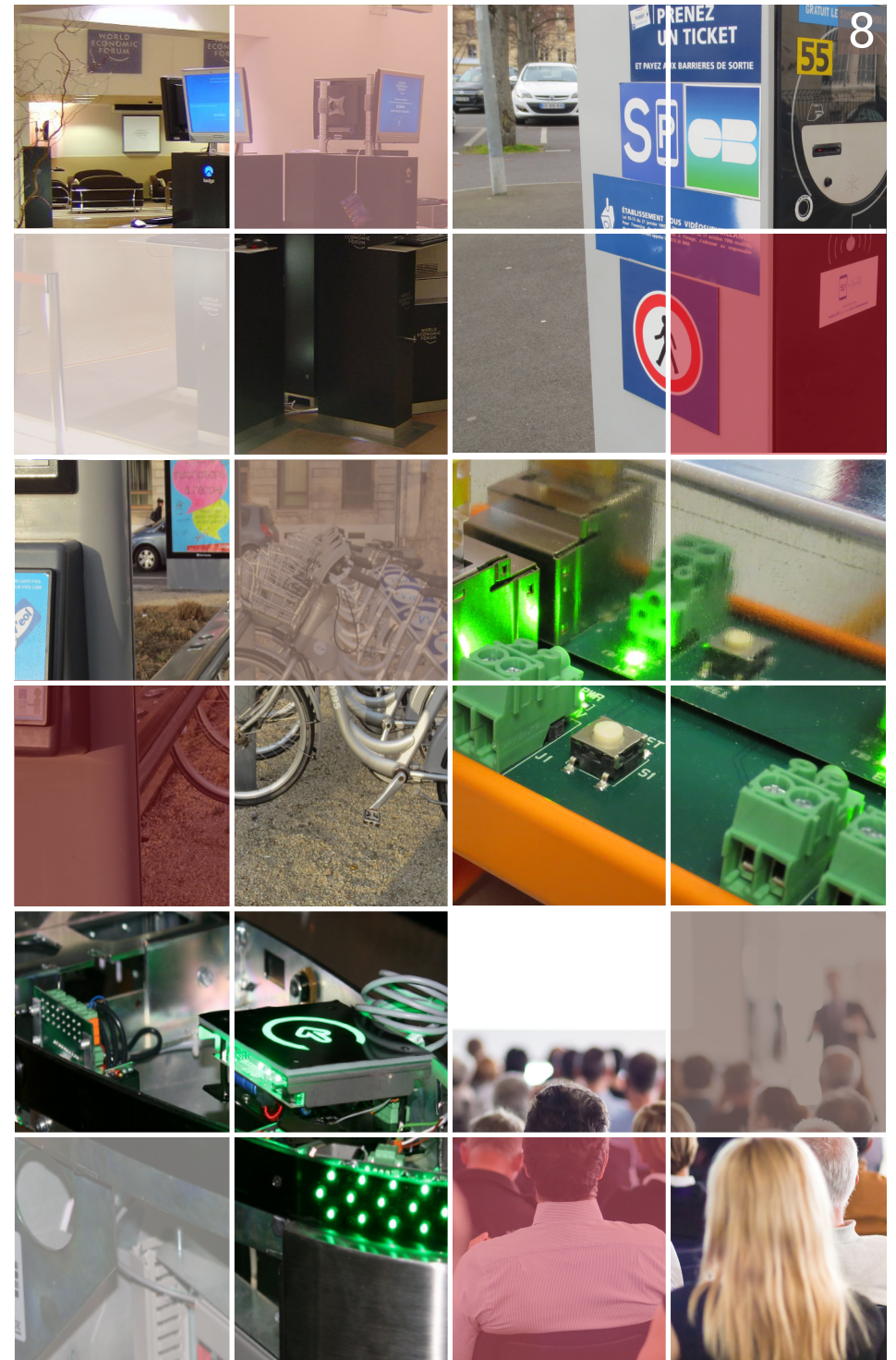
SpringCard is a recognized expert in the development of buried systems (generally around embedded Linux) in the access control or the transport domains.

Our company is also a reference regarding the conception (design) of complete architectures around smart cards. We emphasise securing all transactions to insure both the authenticity and the confidentiality of the exchanges.

Ever since the begining, we actively work on development on mobile terminals, we stay in the frontline with portable implementations for Android, iOS and Windows

## Focus on training

SpringCard's teams regularly give trainings. They cover a wide range of topics such as an overview of the technologies based on cards or NFC (for decision makers and sales representatives), or on a specific point of our expertise.



# SpringCard, your reliable partner

## Confidentiality and loyalty: the keys of a long-term development.

To respect the professional secrecy allows us to include major groups among our customers and our partners.

As innovation is also built through collective intelligence, it is necessary to find the proper interlocutors to turn to good account the ideas. SpringCard belongs to those.

Whatever the stage of your project is, either a simple idea or an almost finished product, we will provide you the listening you need, with the promise of confidentiality.

Confidence and loyalty are also the key words of the relations we build with our suppliers and our subcontractors. Our partnerships focus on closeness and long-term collaborations. That is the best way to guarantee the quality of supply and to facilitate continuous improvements thanks to contributions of everyone.

## SpringCard aims at performance and thinks long term.

### Insure the widest allowed interoperability

SpringCard knows that it is not right to make the customer dependent on a technology to gain his loyalty. It is actually necessary to insure him the best services. That is why SpringCard is attached to designing its products in accordance with the widest range of standards.

### Towards serenity

SpringCard insures the upward compatibility of its products. When a products' family comes to the end of its life, it is always replaced by another family, with increased or updated performances, but with the same dimensions and behavior.

## They are our clients

Thales Group Q-Park  
 ITN-International Trophy  
 SNCF SNCB  
 Evolis-Card-Printers  
 Skidata Zetes Orange  
 HP Effitic RATP Effia  
 STIB Nedap IER  
 Vullog Fime Designa  
 NXP Pollux Kontron  
 Ingenico EADS Centralp  
 Smoove Emotic  
 Sodexo Tech-Event  
 Sagem Morpho  
 JCDecaux Veolia Transport  
 Omnitech Security

For 15 years, SpringCard supplies electronic products for industry, tertiary sector and general public.

### Accompany and advise: always more!

SpringCard designs state-of-the-art products but the technologies of electronics and communication constantly change...

Therefore, the key to our success is to watch attentively the market and to anticipate trends and needs:

- ✓ to accompany the customers in the jumble of the standards and the uses
- ✓ to design consistent ranges of products

SpringCard's teams know how to build an open and educational dialogue around the uses and the possibilities of using its products.

### Cultivating our difference and bringing added value

The engineers of SpringCard invest in the committees of standardization and participate regularly in meetings with other actors in the sector.

Close to their customers, they are interested in their jobs, while bringing a fresh outside eye. Beyond the choice of a product, working with SpringCard is often the occasion to explore new technologies or to create opportunities in a new ecosystem. For all these reasons, you can rely on a true co-development in a relation where everybody wins.

## YOUR EXPERT IN CONTACTLESS SOLUTIONS

SpringCard offers a wide range of products to meet as many  
needs and use cases as possible.

With a 15-year experience in contactless smartcards, communication  
technologies and development on embedded or mobile systems, SpringCard  
R&D Team is also a valuable partner to design your own solution or product.

### SpringCard in the world

Angers - Paris - Strasbourg  
San Diego - San Francisco - Sydney - Tokyo



[www.springcard.com](http://www.springcard.com)

SpringCard and the SpringCard logo are registered trademarks of SPRINGCARD SAS.

MIFARE, MIFARE Classic, MIFARE DESFire, MIFARE Plus, MIFARE UltraLight,ICODE, SmartMX, NTAG are registered trademarks of NXP B.V. and are used under license.  
FeliCa is a registered trademark of Sony Corporation. Tag-it is a trademark of Texas Instruments. The N Mark is a registered trademark of NFC Forum, Inc. Bluetooth is a registered trademark of Bluetooth SIG, Inc.  
Some icons made by Freepik, Elegant Themes, Sarfraz Shoukat, Picol, Situ Herrera, Icomoon, Icons8, OCHA from [www.flaticon.com](http://www.flaticon.com)

We reserve the right to change specifications, product descriptions, or to stop manufacturing a product, at any time and without prior written or oral notice.  
Non-contractual pictures and drawings.

SPRINGCARD SAS au capital de 227 000 € (FRANCE) - RCS EVRY B 429 665 482 - NAF 722 C - VAT #: FR 27 429 665 482  
Copyright © SPRINGCARD SAS 2016, tous droits réservés.



Products designed and  
manufactured in France

