



CSB4-U

USB driver installation

CONTENTS

1. INTRODUCTION	3
1.1. COVERED PRODUCTS	3
1.2. ALTERNATE OPERATING SYSTEMS	3
1.3. WHERE CAN I FIND THE SOFTWARE ?	4
2. USB DRIVER INSTALLATION	5
2.1. READ ME FIRST.....	5
2.2. RUN SDD100 SETUP WIZARD.....	6
3. CONNECT THE DEVICE ON THE COMPUTER	10
3.1. FIRST CONNECTION ON THE COMPUTER	10
3.1.1 <i>Windows 2000</i>	10
3.1.2 <i>Windows Vista and Windows XP</i>	11
3.2. VERIFY DRIVER INSTALLATION	12
3.2.1. <i>Windows Vista</i>	12
3.2.2. <i>Windows XP</i>	13
3.3. TEST DEVICE COMMUNICATION	14
3.4. TROUBLESHOOTING	15

1. INTRODUCTION

This manual explains how to install Pro-Active USB driver for CSB4-U, and compliant devices.

USB driver is shipped in a software package, referenced SDD100, together with a diagnostic application.

1.1. COVERED PRODUCTS

Pro-Active CSB4-U is an USB contactless reader / writer. Its core is a Pro-Active K531 contactless module. A dedicated FTDI chip implements the USB-to-serial functionality.

This manual also covers all Pro-Active products using the same FTDI chip, namely :

- **Pro-Active CSB5-U** : USB contactless reader / writer with embedded smartcards and SIM/SAM readers, and optional biometric (fingerprint) capabilities,
- **Pro-Active INT-USB-TLL and INT-USB-ITL** : interfaces for K531 and K632 modules, IWM-K531 and IWM-K632 proximity readers, and more.

This USB driver targets **Microsoft Windows 2000, Microsoft Windows XP** and **Microsoft vista** only.

1.2. ALTERNATE OPERATING SYSTEMS

On most operating systems, developers can use the K531 SDK to build applications for the CSB or other K531-based products.

Generally speaking, the FTDI chip will be seen as a Virtual Communication Port (VCP), and the Pro-Active product will be accessed through serial communication.

Please refer to K531 development related documentations for more information.

Linux : kernel 2.6 includes the driver for the FTDI chip. Pro-Active products using this chip are seen as a VCP, with the name `/dev/ttyUSBxxx`. Developers can use the K531 SDK to build applications using the CSB4-U through this channel.

FTDI provides also drivers for **Windows CE** and **Mac OS**.

VCP page on FTDI's web site : <http://www.ftdichip.com/Drivers/VCP.htm>

1.3. WHERE CAN I FIND THE SOFTWARE ?

The **CSB4 USB driver** is available online at :

www.pro-active.fr



The screenshot shows the Pro Active website's 'Downloads' page for 'Drivers'. The page features a navigation menu with 'Home', 'Products', 'Downloads', 'Support', 'Customers', and 'Contact us'. A banner for 'OEM contactless read/write modules' is visible. The main content area lists several drivers with columns for 'File name', 'Target', 'Version', 'Date', and 'Size'. The drivers listed are:

File name	Target	Version	Date	Size
USB driver for CSB6 legacy				
Driver for the CSB6 family, operating in legacy mode (compliant with SpringProx API)				
sdd470-ab.exe	Windows	ab	26/03/2008	493 kB
sdd470-ac.exe	Windows	ac	16/04/2008	505 kB
<i>NOTE : In legacy mode, CSB6 uses a standard USB CDC/ACM profile. Actual driver is provided by Microsoft with the OS. This package only provides the relevant '.inf' file.</i>				
USB driver for Pro-Active's FTDI-based devices				
Driver for CSB-4U, CSB-5U, IWM-K531-SU, IWM-K632-SU, K531-PRN, and USB interface for K531-TTL				
sdd100-aa.exe	Windows	aa	27/11/2007	1052 kB
<i>NOTE : This is only a re-packaging of FTDI's Combined Driver Model (CDM v2) with Pro-Active's product IDs</i>				
SDIO driver				
Drivers for SpringSIM-SD & SpringProx-SD on PocketPC				
sdioserial_wince500_ppc2005_armv4.exe	PocketPC 2005 WinCE 5.0 ARMv4		05/06/2006	49 kB
sdioserial_wince420_ppc2003_armv4.exe	PocketPC 2003 WinCE 4.2 ARMv4		05/06/2006	51 kB
<i>NOTE : Use ActiveSync to install this driver on your PocketPC</i>				
USB driver for Sagem MorphoSmart				
Driver for the Sagem MorphoSmart fingerprint reader				
sd8d5p-aa.exe	Windows	aa	16/04/2008	494 kB
<i>NOTE : This is only a re-packaging of Sagem MorphoSmart USB Driver. Check Sagem Morpho's website for updates.</i>				

- Go to www.pro-active.fr ,
- Click "Downloads" in main menu,
- Select "Drivers" in the downloads page,

Download the file labelled "**USB driver fro Pro-active's FTDI-based devices**" (sdd100).

2. USB DRIVER INSTALLATION

2.1. READ ME FIRST

Please read following warning before connecting the CSB4-U (or compliant product) to your computer :



Do not connect the device now !

The USB driver must be installed before connecting the device to your computer.

Connecting the device before actual driver installation may lead to a bogus configuration, as Windows may download and install automatically a signed driver, instead of using the expected one.



Disconnect Windows XP SP 1 from the Internet during this procedure

Some users have been experiencing problems installing this driver under Windows XP with Service Pack 1.

This is due to Windows XP Update trying to automatically install XP a certified replacement driver, instead of the Pro-Active provided driver.

This problem can be overcome by temporarily disconnecting from the Internet while installing the driver and when connecting the device to the computer for the first time.

Tip : don't forget to download the driver before disconnecting from the Internet.



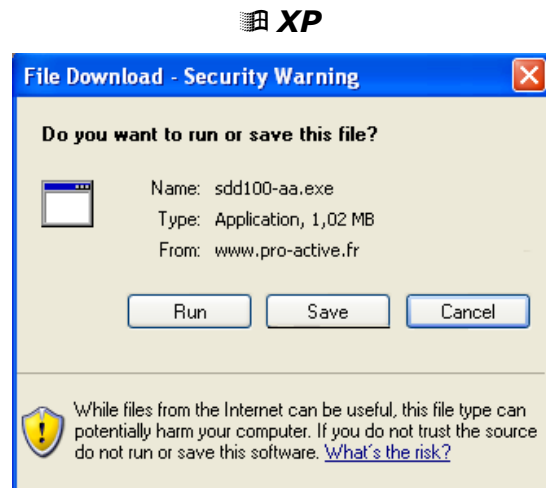
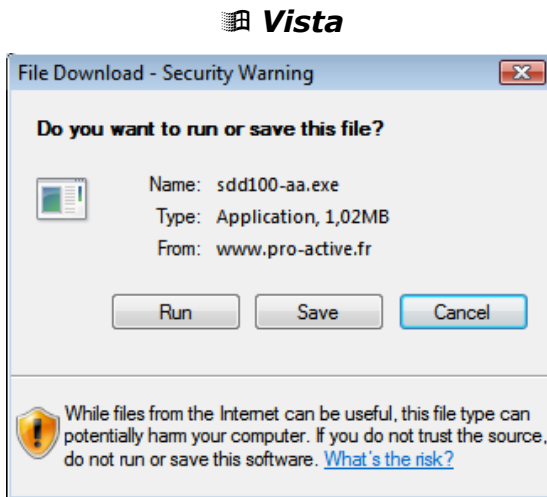
Use a direct USB connection

When you will connect the device to your computer for the first time, plug it directly into an USB port of the computer.

Do not connect it through any kind of USB hub or other adapter.

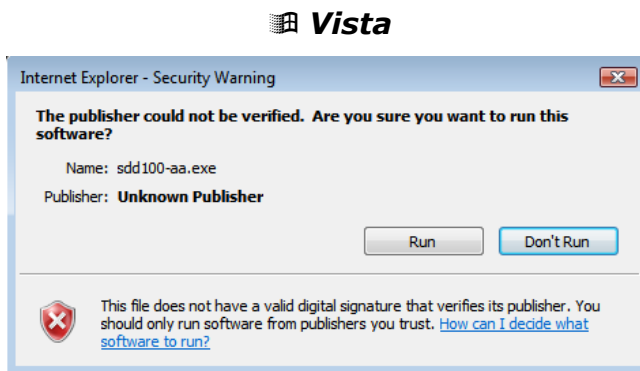
2.2. RUN SDD100 SETUP WIZARD

- Log-on to your computer with administrative privileges (Administrator account).
- Run the downloaded installation program.



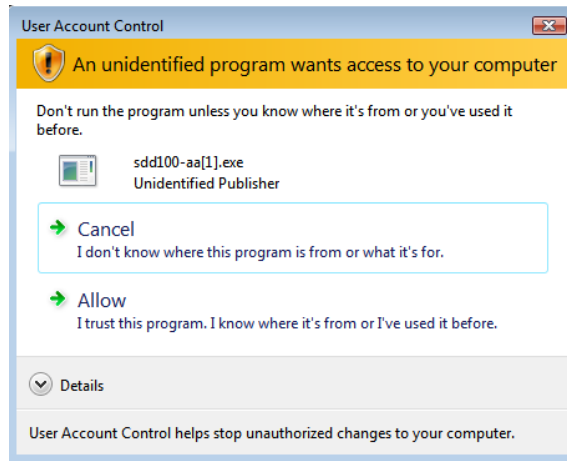
- If prompted by a security warning (see below), please accept driver installation anyway by clicking on "Run".

This warning appears only because the package is not digitally signed.

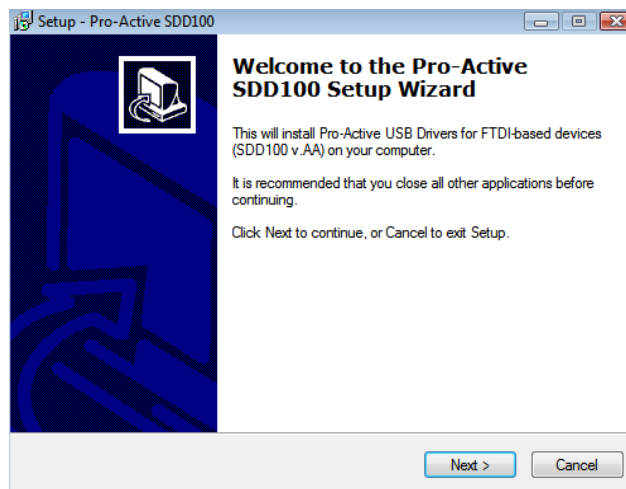


- **Vista** : the User Account Control system asks you to confirm you want to run the program. Click "Allow".

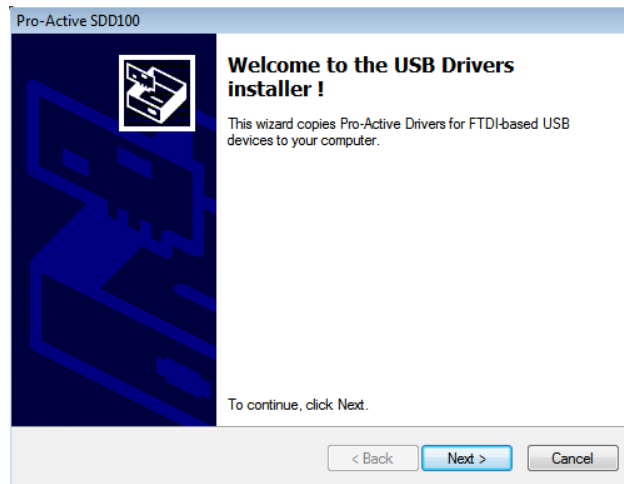
Vista



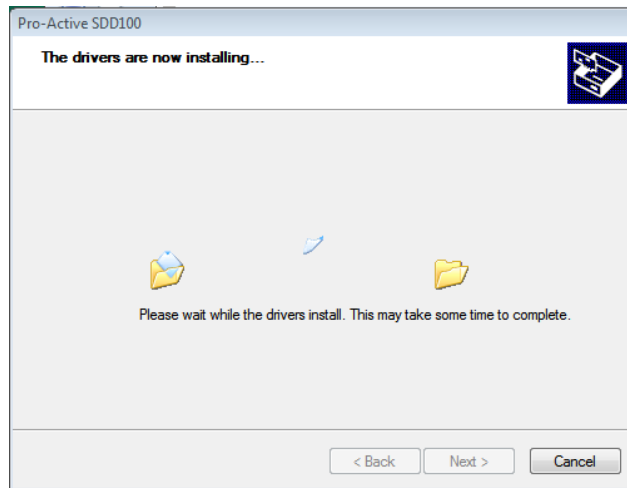
Now follow the installation program, clicking "Next" at each step.



Step 1



Step 2

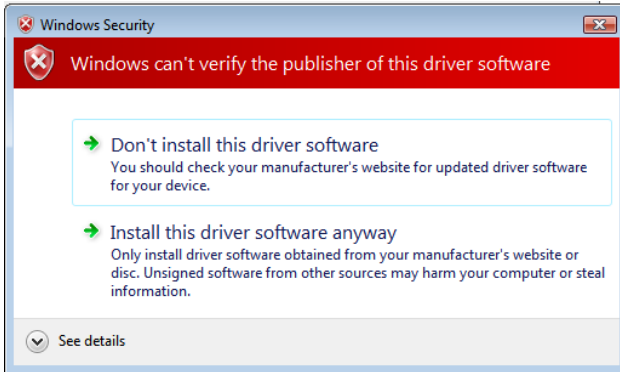


Step 3

- Depending on your security settings, you may be asked twice to confirm driver installation (see below). Please accept driver installation by clicking "Install anyway" or "Continue anyway".

This warning appears only because Microsoft WHQL has not signed the installation package, but the FTDI driver it contains is actually WHQL-certified.

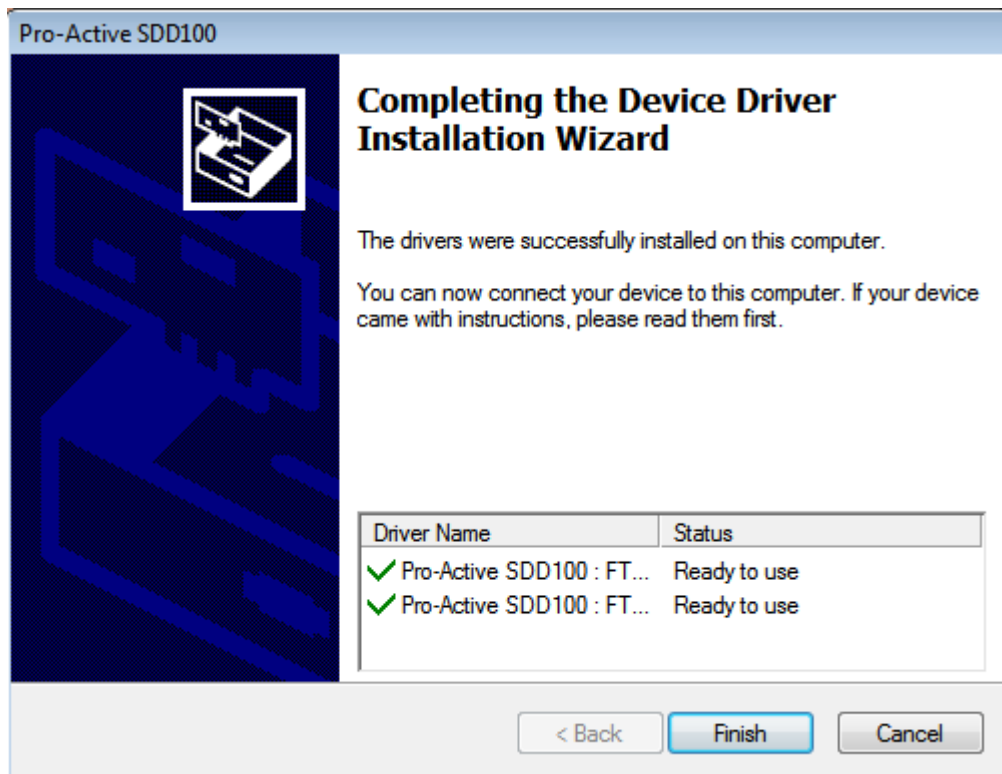
Vista



XP



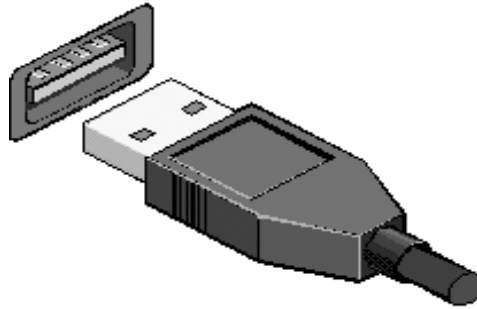
- Once the driver has been successfully installed, click "Finish" in the last screen :



Step 4 (done)

3. CONNECT THE DEVICE ON THE COMPUTER

3.1. FIRST CONNECTION ON THE COMPUTER



- Plug the CSB4-U connector into a free USB port.
- In most cases, Windows will automatically activate the device. Sometimes, the "Found new hardware wizard" will be launched instead. Please follow the procedure below, depending on the operating system version :

3.1.1 *Windows 2000*

If prompted by the "Found new hardware wizard",

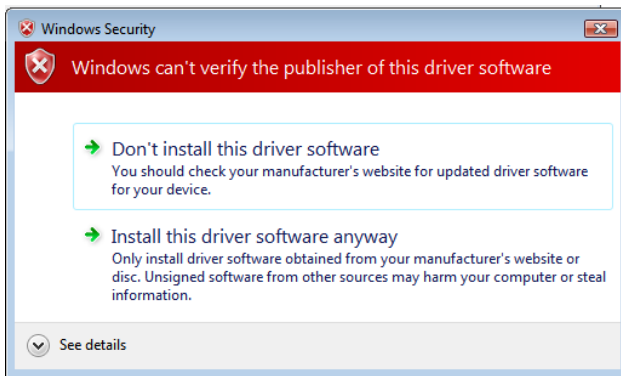
- Select "Search for a suitable driver for my device",
- Check the "Specify a location" box,
- When the prompted "Copy manufacturer's files from", browse to the driver installation directory (namely `C:\Program Files\Pro-Active\FDD100`),
- Confirm your choice,
- The device is now ready for use.

3.1.2 Windows Vista and Windows XP

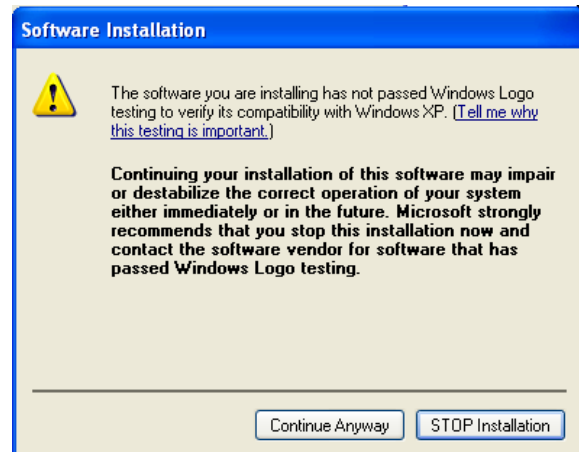
If prompted by the "Found new hardware wizard",

- If prompted for connection to Windows Update, select "Do not connect to Windows Update this time",
- Select "Install from a list or specific location",
- Select "Search the best driver in the locations", check the "include this location in the search" box, and browse to the driver installation directory (namely C:\Program Files\Pro-Active\FDD100),
- If prompted, please accept driver installation by clicking "Install anyway" or "Continue anyway" :

 **Vista**



 **XP**

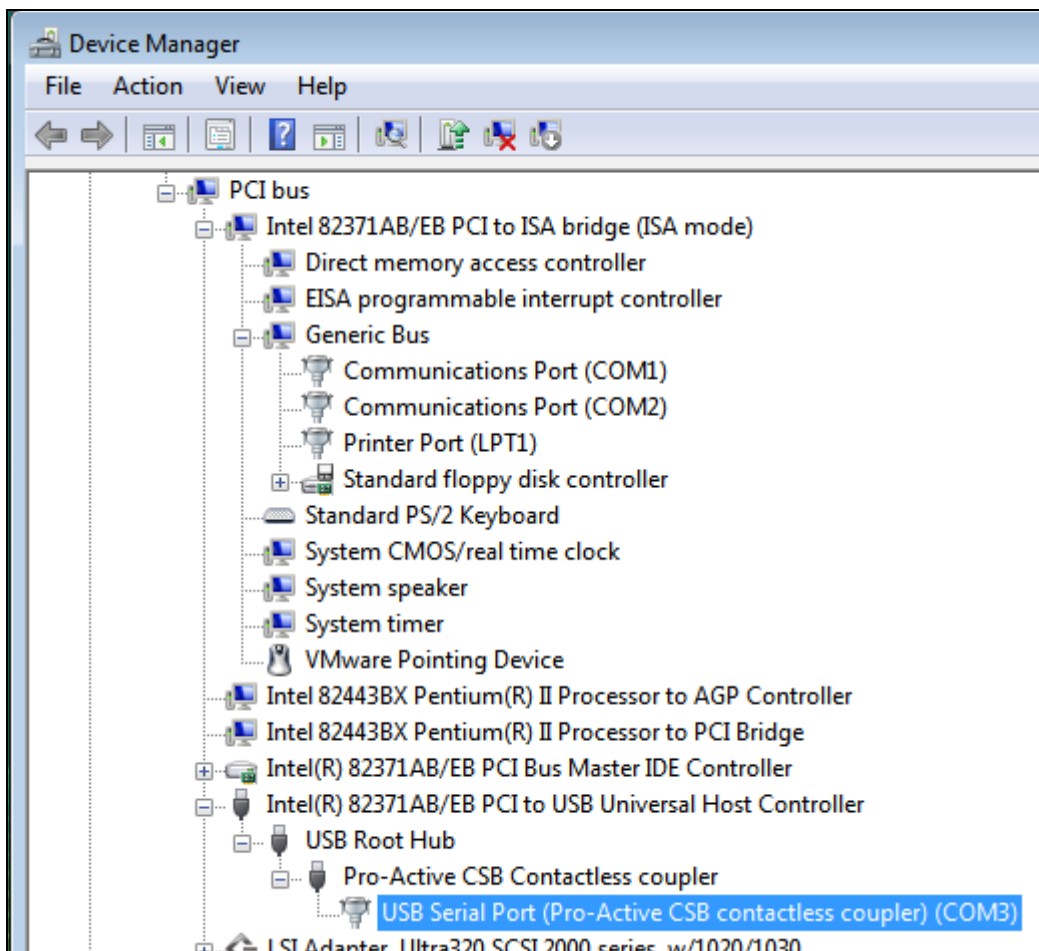


- The device is now ready for use.

3.2. VERIFY DRIVER INSTALLATION

3.2.1. Windows Vista

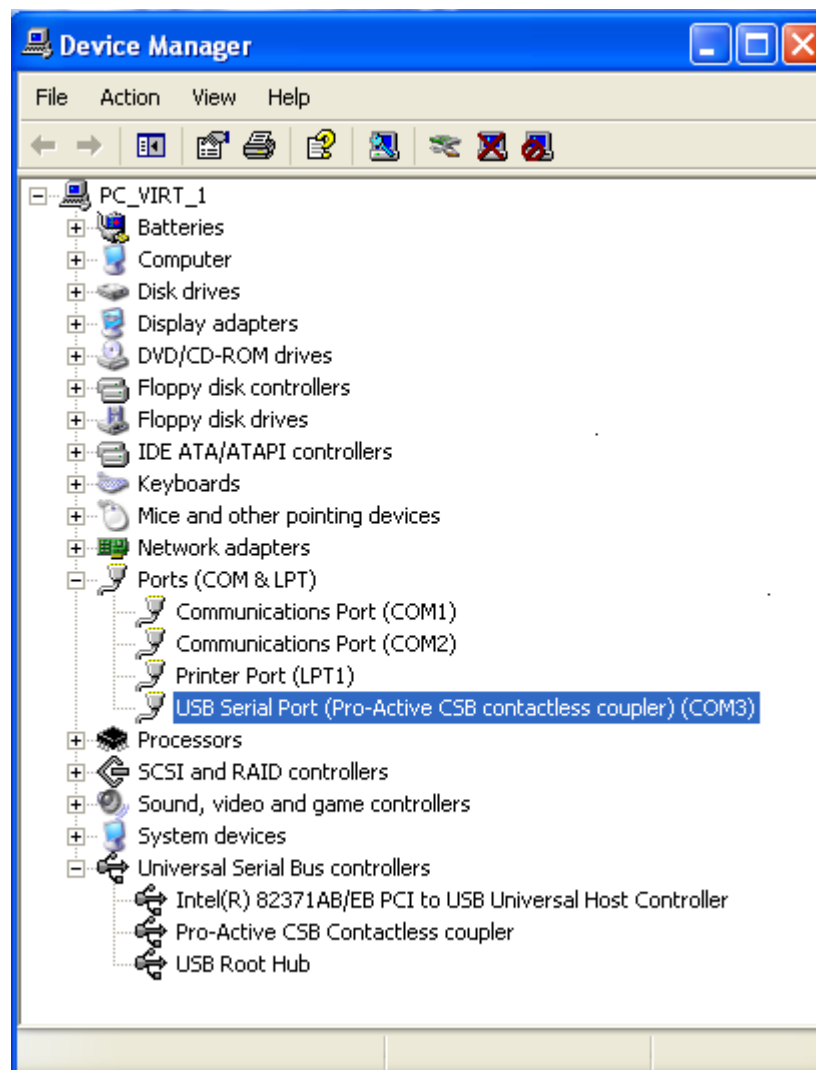
- In the "Start menu", click on "Control Panel"
- Click on "Device manager"
- You will be prompt by User Account Control ; click on "Continue"
- In the menu, check that the selected View is "Device by connection".
- In "PCI bus" section, look for a "Pro-Active CSB Contactless coupler".
- Check that a serial communication port has been assigned to the product.



VCP driver is loaded, the CSB has been assigned COM3

3.2.2. Windows XP

- In the "Start menu", select "Settings" – "Control Panel"
- Click on "System "
- Choose "Hardware"
- Click on "Device Manager".
- In "Ports (COM & LPT)", look for a "Pro-Active CSB Contactless coupler".



VCP driver is loaded, the CSB has been assigned COM3

3.3. TEST DEVICE COMMUNICATION

- In the “Start menu”, select “Pro-Active” – “SDD100” – “CSBDiag”
- Alternatively, you may launch CSBDiag.exe located in folder C:\Program Files\Pro-Active\Drivers\SDD100



- Check “USB direct access (FTDI D2XX driver)” and click “Test communication”. If successful, skip next step.
- If the first test failed, check “Serial communication port”, and choose the appropriate COM port (as identified in device manager, see § 3.2). Click “test communication”.
- Once connected, click “Contactless polling”. Put one ISO 14443 compliant card (A or B) on the reader to verify that everything is OK.
- Terminate the program by clicking “OK”.

3.4. TROUBLESHOOTING

If the test described in § 2.4 is unsuccessful, please observe the following procedure :

- Un-plug the CSB, restart the computer, plug the CSB, and perform the test again,
- Un-plug the CSB, uninstall the driver ("Control panel" – "Add remove program"), install the driver again, and restart the computer before doing the test again.

If still unsuccessful,

- Launch "Device manager", locate the device entry in the tree (see § 3.2),
- Right-click on the device and click "Properties",
- Choose "Driver update" or "Change driver" in the "Driver" tab of the dialog box,

Force a manual installation of the driver from the installation folder :

C:\Program Files\Pro-Active\Drivers\SDD100

DISCLAIMER

This document is provided for informational purposes only and shall not be construed as a commercial offer, a license, an advisory, fiduciary or professional relationship between Pro-Active and you. No information provided in this document shall be considered a substitute for your independent investigation.

The information provided in document may be related to products or services that are not available in your country.

This document is provided "as is" and without warranty of any kind to the extent allowed by the applicable law. While Pro-Active will use reasonable efforts to provide reliable information, we don't warrant that this document is free of inaccuracies, errors and/or omissions, or that its content is appropriate for your particular use or up to date. Pro-Active reserves the right to change the information at any time without notice.

Pro-Active does not warrant any results derived from the use of the products described in this document. Pro-Active will not be liable for any indirect, consequential or incidental damages, including but not limited to lost profits or revenues, business interruption, loss of data arising out of or in connection with the use, inability to use or reliance on any product (either hardware or software) described in this document.

These products are not designed for use in life support appliances, devices, or systems where malfunction of these products may result in personal injury. Pro-Active customers using or selling these products for use in such applications do so on their own risk and agree to fully indemnify Pro-Active for any damages resulting from such improper use or sale.

COPYRIGHT NOTICE

All information in this document is either public information or is the intellectual property of Pro Active and/or its suppliers or partners.

You are free to view and print this document for your own use only. Those rights granted to you constitute a license and not a transfer of title : you may not remove this copyright notice nor the proprietary notices contained in this documents, and you are not allowed to publish or reproduce this document, either on the web or by any mean, without written permission of Pro-Active.

EDITOR'S INFORMATION

Published by **Pro-Active SAS**, 13, voie La Cardon 91120 Palaiseau – France

R.C.S. EVRY B 429 665 482 - APE 2612 Z

For more information, please visit www.pro-active.fr or contact us at info@pro-active.fr .