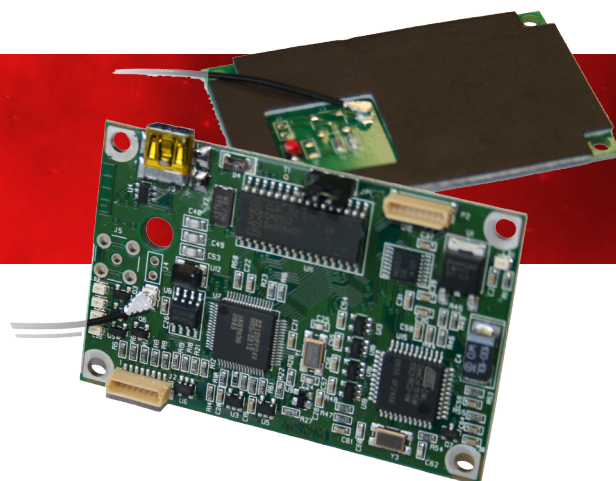


## CRAZYWRITER LT OEM CONTACTLESS SMARTCARD READER



### KEY FEATURES

SpringCard CrazyWriter LT is a versatile 13.56MHz contactless reader and encoder for PC.

With a compact design and single bus-powered USB interface, CrazyWriter LT fits easily into card printers, vending or ticketing machines, fare gates or validators in transportation networks, and more.

### PC/SC SMARTCARD READERS

SpringCard CrazyWriter LT is PC/SC compliant, and it brings immediate contactless card support to existing PC/SC applications (the whole product is seen as 3 PC/SC readers : 1 contactless).

CrazyWriter LT may be also configured for legacy : in this case, it is 100% compatible with earlier products from SpringCard (CSB4, K531...).

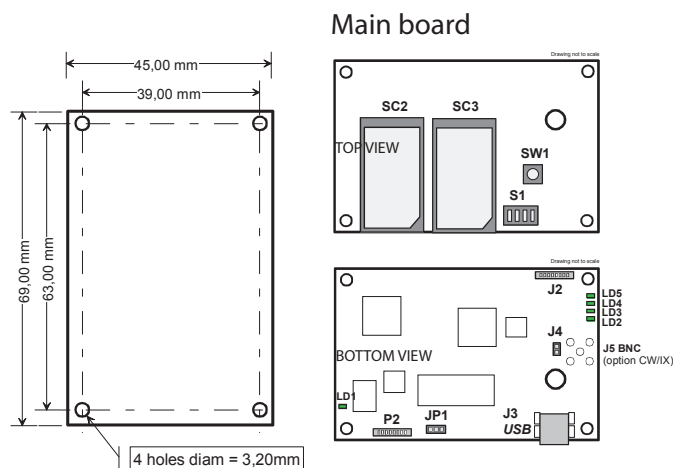
### A FEW TYPICAL APPLICATIONS

- Card pre-personalization and personalization
- Vending or ticketing machines

### ABOUT SPRINGCARD

SpringCard products are designed and manufactured in France, and distributed worldwide.

With 12 years of expertise in smartcards, contactless, RFID and NFC, SpringCard is the ideal partner to make your project a success.



Same outside dimensions for the 3 boards  
thickness = 1,6 mm - global tolerance = ± 0,1 mm

#### HEADQUARTERS, EUROPE SPRINGCARD

13 voie la Cardon  
Parc Gutenberg  
91120 Palaiseau  
FRANCE

Phone : +33 (0) 164 53 20 10  
sales@springcard.com

#### AMERICAS SPRINGCARD

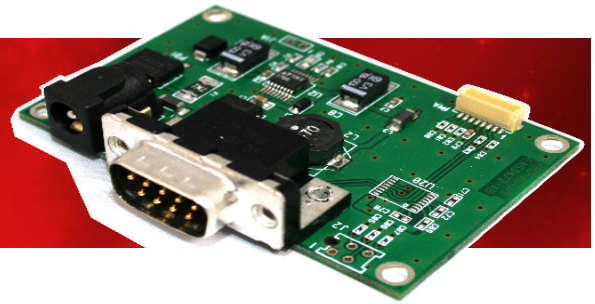
6161 El Cajon Blvd,  
Suite B, PMB 437,  
San Diego, CA 92115  
USA

Phone : +1 (713) 261 6746  
sales-usa@springcard.com

[www.springcard.com](http://www.springcard.com)

A PRO ACTIVE BRAND  
**Pro Active**

## CRAZYWRITER LT OEM CONTACTLESS SMARTCARD READER



### TECHNICAL SPECIFICATIONS

Contactless smartcard interface	
Standards	ISO/IEC 14443 A and B, T=CL ISO/IEC 15693 and 18000-3
RFID carrier	13.56 MHz
Operating distance	up to 8 cm depending on card and on environment
Card baud rate	106, 212, 424 or 848 kbps
Supported cards (partial list) :	
<ul style="list-style-type: none"> <li>▪ NXP (Philips) ICODE1, ICODE-SLI, etc</li> <li>▪ Texas Instrument TagIT</li> <li>▪ NXP (Philips) MIFARE Classic &amp; UltraLight</li> <li>▪ NXP (Philips) DESFIRE, SmartMX, ProX</li> <li>▪ Infineon SLE66 family</li> <li>▪ ST MicroElectronics SR, SRI, SRIX families</li> <li>▪ HID iClass, Inside PicoTag</li> <li>▪ ASK CTS256/CTS512</li> </ul>	
And virtually any ISO/IEC 14443 A or B compliant smartcard, or ISO/IEC 15693 compliant RFID label	

USB interface	
Standard	USB 2.0 (12Mbps) - also supports 1.1
Power supply	Bus powered (≈300mA under 5V)
Default configuration is PC/SC	

PC /CS mode	
Standard USB CCID profile	
Windows driver	2000/XP/Vista
Linux and others	Supported by pcsc-lite CCID driver
API and SDK	Full PS/SC - Free SDK available

Serial Interface	
Connector	JST: BM08B-SRSS-TB(LF)(SN)
Power supply	5V +/- 10%.
Baud rate	38400 bps
Legacy Mode only	

Legacy mode	
USB virtual serial comm. port API compliant with existing products (SpringProx-CF, CSB4, CSB5, K531,...)	
Drivers	Windows, Linux, ...
API and SDK	SpringProx API - Free SDK available

Optional board - serial Interface (CW-RS)	
Standard	RS-232 (DB9 female connector)
Power supply	9 to 12V DC - 500mA min.
Baud rate	38400 bps
Legacy Mode only	

Hardware specifications	
<b>N.B. : This is an OEM product, sold as electronic parts, without housing</b>	
Dimensions (LxWxH)	Each board = 69 x 45 x 1,6 mm
Max. distance antenna to mother board	2-wire twisted cable = 5 cm 50 Ω coaxial cable = 2 m

Environment and safety	
Operating temperature	0 → +70°C
Storage temperature	-40 → +85°C
Humidity	5 → 95 % (noncondensing)
MTBF	500 000 hours
CE mark	EN50082 / EN55022 class B
Other standards	RoHS, FCC pending

### ORDER CODES

PART #	Description
SC2250	<b>CrazyWriter HSP mother board + 69x45 mm antenna</b> 50cm micro-coax cable included, w/o USB cable
CWRS	<b>RS232 interface for CrazyWriter</b> Power supply not provided

#### PRECAUTIONS FOR INSTALLATION

This device uses inductive coupling (magnetic field) to power the cards and communicate with them. Precaution must be taken to keep the reader far from any source of perturbation (e.g. other readers, computers...). Installing the reader near a metal surface will decrease the operating distance and increase power consumption. SpringCard has a long experience. Please contact us if you need any assistance to use this device.

Information in this document is subject to change without notice.

Copyright © PRO ACTIVE SAS 2008-2012, all rights reserved.  
Reproduction without written permission of PRO ACTIVE is forbidden.  
SPRINGCARD, PRO ACTIVE, and both logos are registered trademarks of PRO ACTIVE SAS.  
All other trademarks are property of their respective owners.

PRO ACTIVE company with a capital of 227 000 €  
R.C.S. EVRY B 429 665 482  
N.A.F. 722 C  
VAT # : FR 27 429 665 482  
France

[www.springcard.com](http://www.springcard.com)

A PRO ACTIVE BRAND  
**Pro Active**