

CSB6 FAMILY PRODUCTS

Firmware upgrade procedure

Headquarters, Europa

SpringCard
13 voie la Cardon
Parc Gutenberg
91120 Palaiseau
FRANCE

Phone : +33 (0) 164 53 20 10
Fax : +33 (0) 164 53 20 18

Americas

SpringCard
964 Fifth Avenue
Suite 235
San Diego, CA 92101
USA

Phone : +1 (619) 544 1450
Fax : +1 (619) 573 6867

www.springcard.com

DOCUMENT INFORMATION

Category : Production and upgrade
Group : CSB6 Family
Reference : FGF8D4P
Version : AC
Status : APPROVED

REVISION HISTORY

Ver.	Date	Author	Valid. by Tech.	Valid. by Qual.	Approv. by	Remarks :
AA	16/04/08	BBE	BBE	ECL		Translation from french version, Pro Active template
AB	03/02/09	ECL	LTX	LTX		Moved to SpringCard template
AC	02/03/09	JDA			JDA	Added introduction chapter, a few minor corrections, and approval.

TABLE OF CONTENT

1.	INTRODUCTION.....	5
1.1.	ABSTRACT.....	5
1.2.	COVERED PRODUCTS	5
1.3.	AUDIENCE.....	5
1.4.	SUPPORT AND UPDATES	5
2.	GETTING STARTED WITH RENESAS FDT..	6
2.1.	DOWNLOAD AND INSTALL FDT	6
2.2.	CREATE A WORKSPACE	6
2.3.	ADD A FIRMWARE TO YOUR WORKSPACE	7
3.	HOW TO FLASH YOUR PRODUCT.....	8
3.1.	SELECT THE RIGHT FIRMWARE FOR YOUR PRODUCT	8
3.2.	PUT THE MICROCONTROLLER IN FLASH UPGRADE MODE	8
3.3.	FLASH THE PRODUCT	9
3.4.	PUT THE MICROCONTROLLER BACK IN OPERATION MODE	11

1. INTRODUCTION

1.1. ABSTRACT

SpringCard CSB6 Family is a group of contactless smartcard readers, offering various functions and three different operating modes : PC/SC (CCID), Legacy (virtual communication port), RFID scanner (keyboard emulation).

All these products share a common hardware platform, based on the same USB-enabled microcontroller.

This document explain how to upgrade the firmware of this microcontroller, using the flash upgrade software provided by the manufacturer of the microcontroller.

1.2. COVERED PRODUCTS

At the date of writing, this document refers to the four products in the CSB6 Family :

- CSB6,
- Prox'N'Roll,
- CrazyWriter,
- EasyFinger.

Please read the datasheet of every product for specifications and the detailed list of features.

1.3. AUDIENCE

This manual is designed for use by technical support or after-sale teams. It assumes that the reader has expert knowledge of electronics.

1.4. SUPPORT AND UPDATES

Interesting related materials (product datasheets, application notes, sample software, HOWTOs and FAQs...) are available at SpringCard's web site :

www.springcard.com

Updated versions of this document and others will be posted on this web site as soon as they are made available.

For technical support enquiries, please refer to SpringCard support page, on the web at address www.springcard.com/support .

2. GETTING STARTED WITH RENESAS FDT

The microcontroller **SpringCard CSB6 Family** is based on is Renesas H8S/2212UF.

This microcontroller is upgradeable on the field, through its USB link, thanks to Renesas Flash Development Toolkit (FDT) version 4 or newer.

FDT is a Windows program, that installs and runs on 2000/XP/Vista.

2.1. DOWNLOAD AND INSTALL FDT

Latest version of FDT is available free of charge at Renesas' :

- Go to www.renesas.com .
- Navigate to Development Tools → Flash and PROM Programming → Flash Development Kit.
- Choose « Download the latest version of FDT free of charge ».

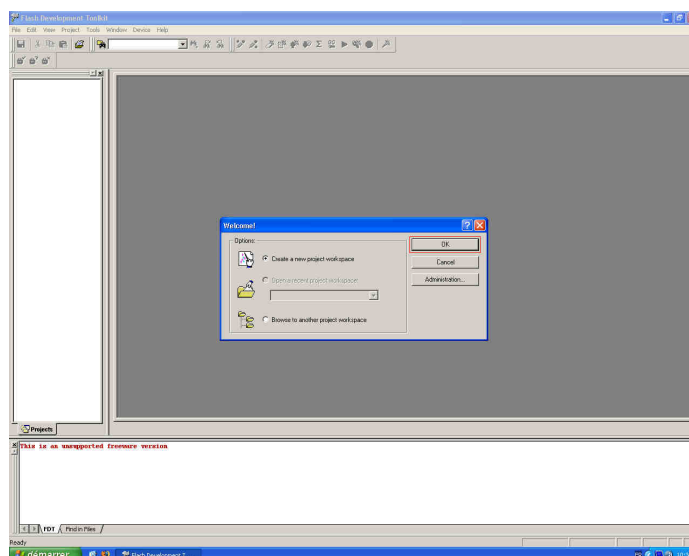
You'll be prompted for your company details before accessing the download.

Note : Renesas' web site changes frequently, and its URLs are not « user friendly », therefore preventing us to give the actual link here. Alternatively, you may temporarily download FDT 4.00 (R00) at

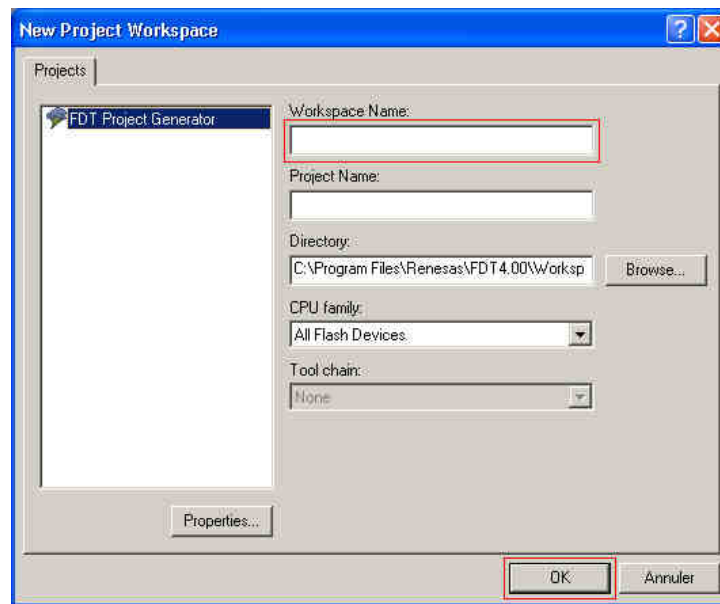
www.springcard.com/download/tmp/fdtv400r00.exe

2.2. CREATE A WORKSPACE

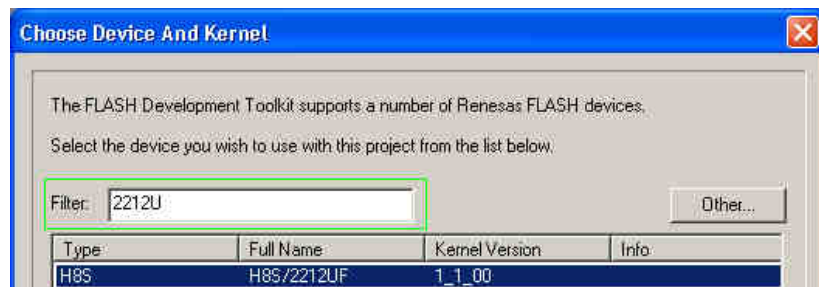
- Launch FDT from Start Menu.



- Choose « create a new project workspace », and click « OK »



- Enter a name for your new project workspace (for instance, *CSB6 Family*), and click « OK ». If left blank, the project name defaults to the same value as the workspace name



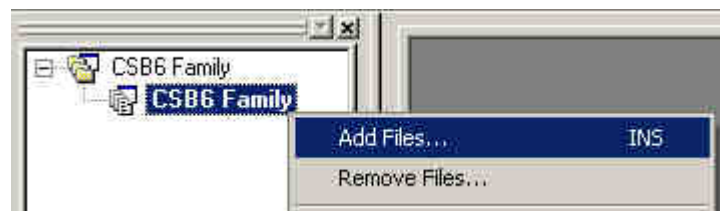
- Enter *2212U* in the filter field, and choose *H8S/2212UF* in the list. Click « Next » to continue



- Choose port « USB Direct », and click « Next »
- In the following pages, click « Next » (leaving all options to their default value), until « Finished »

2.3. ADD A FIRMWARE TO YOUR WORKSPACE

- In the tree on the left, right click on the project.



- In the popup menu, click on « Add Files... »
- Browse to the firmware file you want to download in the product (firmware files have the « .mot » extension).

3. HOW TO FLASH YOUR PRODUCT

3.1. SELECT THE RIGHT FIRMWARE FOR YOUR PRODUCT



All products in the **SpringCard CSB6 Family** share a large part of their hardware including their microcontroller, but of course they behave differently, due both to their hardware specificities and to their own specifications.

Generally speaking, putting the wrong firmware in any product is possible, and may appear to work, but this is not the way the product is intend to operate.

Please make sure to always put the appropriate firmware in the actual product you have.

3.2. PUT THE MICROCONTROLLER IN FLASH UPGRADE MODE

Every product has a configuration switch, or a set of 4 configuration switches, that must be moved to put the device in flash upgrade mode.



Unplug the device from USB (and unplug the external power jack for products having one) before opening the device and moving the configuration switches.

3.2.1. Open the device

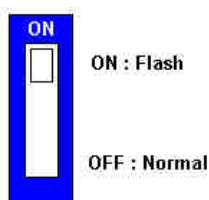
The first step is to open the device (remove the cover) to access the configuration switches.

Please refer to product's detailed documentation for this part.

3.2.2. Put the switches in "flash upgrade" position

a. Devices having only one switch

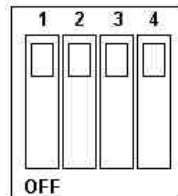
Move the switch to the ON position.



b. Devices having four switches

Before proceeding, note the current position of all the switches.

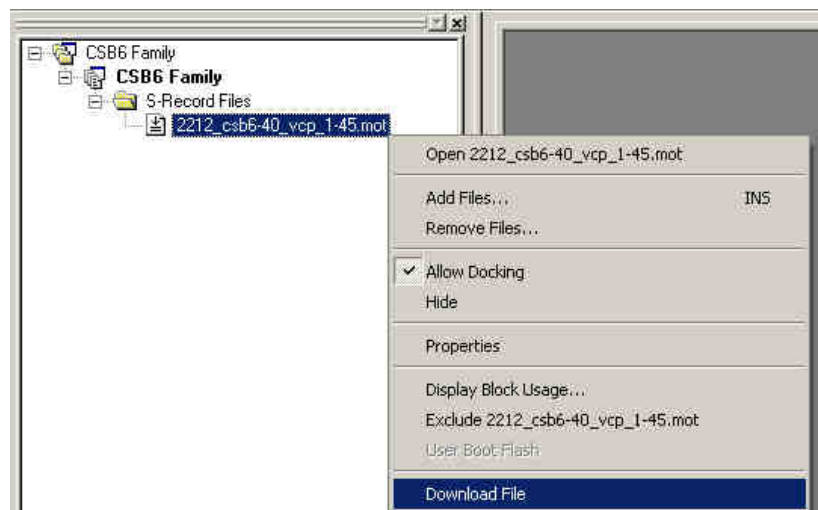
Move all four switches to the ON position.

**3.2.3. Plug the device on**

Connect device's USB port to your computer. Put back power connector in case your device has an external power supply (EasyFinger).

3.3. FLASH THE PRODUCT

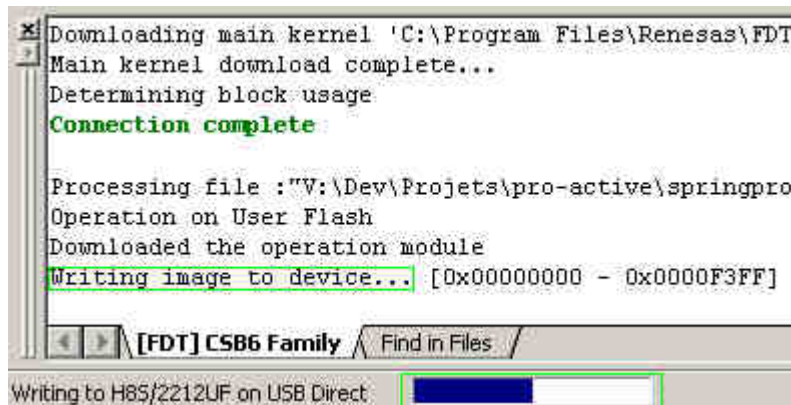
- Back to FDT screen, right click on the file you want to download in the device.



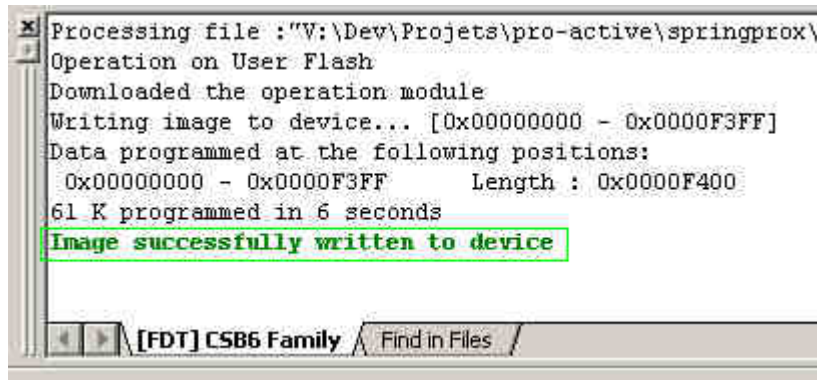
- In the popup menu, click « Download File ».
- FDT now prompts you to select the target USB device. If you've plugged only one product at a time, there must be only one target !



- Select the only target, and click « OK »
- Wait during the flash operation (this takes 20 to 60 seconds)



- When done, FDT displays this message :



- End the procedure by clicking « Disconnect » in the « Device » menu



3.4. PUT THE MICROCONTROLLER BACK IN OPERATION MODE

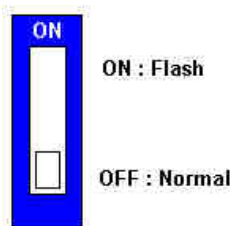


Unplug the device from USB again (and unplug the external power jack for products having one) before proceeding.

3.4.1. Put the switches in "normal" position

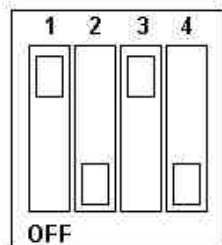
a. Devices having only one switch

Move the switch back to the OFF position.



b. Devices having four switches

Put back the switches in the position you've noted in 3.2.2.b.



The positions listed below are informative only. Please refer to the detailed product documentation for details.

Product	Normal position of the switches			
	1	2	3	4
CSB6	ON	OFF	ON	OFF
CrazyWriter	ON	OFF	ON	OFF
EasyFinger	ON	OFF	OFF	OFF

DISCLAIMER

This document is provided for informational purposes only and shall not be construed as a commercial offer, a license, an advisory, fiduciary or professional relationship between PRO ACTIVE and you. No information provided in this document shall be considered a substitute for your independent investigation.

The information provided in document may be related to products or services that are not available in your country.

This document is provided "as is" and without warranty of any kind to the extent allowed by the applicable law. While PRO ACTIVE will use reasonable efforts to provide reliable information, we don't warrant that this document is free of inaccuracies, errors and/or omissions, or that its content is appropriate for your particular use or up to date. PRO ACTIVE reserves the right to change the information at any time without notice.

PRO ACTIVE does not warrant any results derived from the use of the products described in this document. PRO ACTIVE will not be liable for any indirect, consequential or incidental damages, including but not limited to lost profits or revenues, business interruption, loss of data arising out of or in connection with the use, inability to use or reliance on any product (either hardware or software) described in this document.

These products are not designed for use in life support appliances, devices, or systems where malfunction of these product may result in personal injury. PRO ACTIVE customers using or selling these products for use in such applications do so on their own risk and agree to fully indemnify PRO ACTIVE for any damages resulting from such improper use or sale.

COPYRIGHT NOTICE

All information in this document is either public information or is the intellectual property of PRO ACTIVE and/or its suppliers or partners.

You are free to view and print this document for your own use only. Those rights granted to you constitute a license and not a transfer of title : you may not remove this copyright notice nor the proprietary notices contained in this documents, and you are not allowed to publish or reproduce this document, either on the web or by any mean, without written permission of PRO ACTIVE.

Copyright © PRO ACTIVE SAS 2009, all rights reserved.

EDITOR'S INFORMATION

PRO ACTIVE SAS company with a capital of 227 000 €
RCS EVRY B 429 665 482
Parc Gutenberg, 13 voie La Cardon
91120 Palaiseau – France